



UNIVERSIDAD TECNOLÓGICA DE PEREIRA

GRUPO POLIFENÓLES UTP

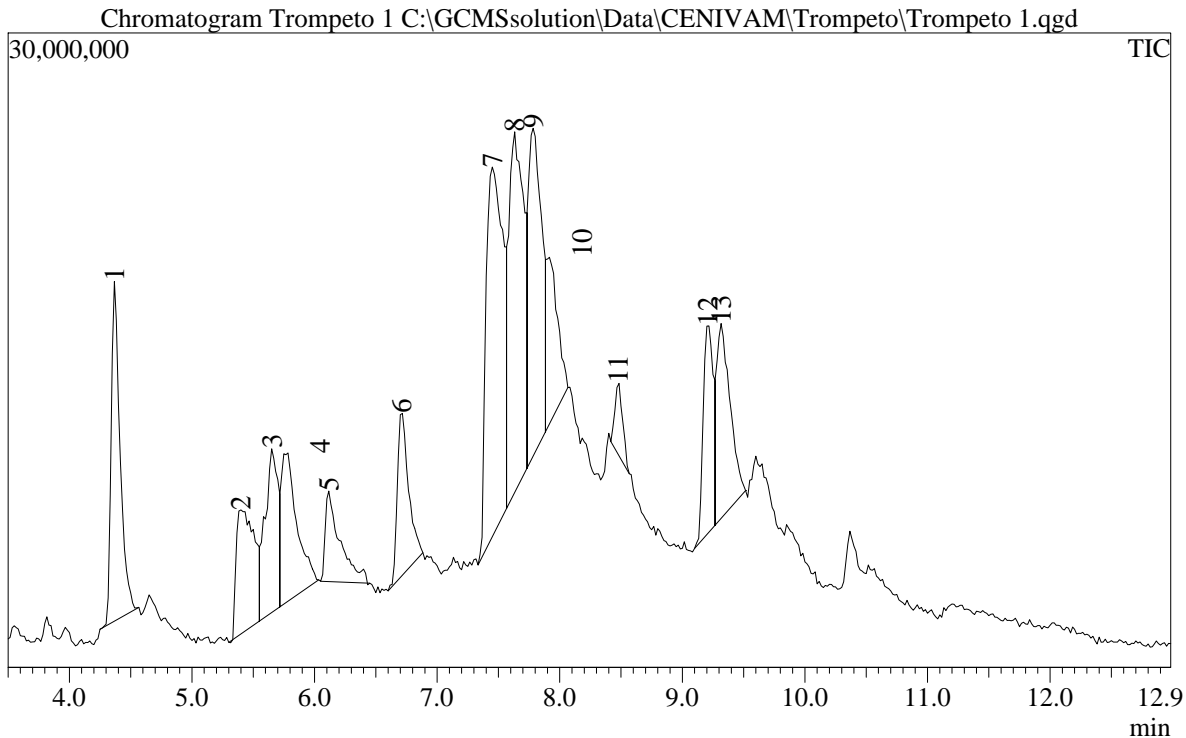


LABORATORIO DE CALIDAD DE PRODUCTOS NATURALES

CERTICADO DE CALIDAD/QUALITY CERTIFICATE

Reporte/Report : Trompeto 1
 Fecha/Date : 3/10/2007 3:56:23 PM

Identificación de la muestra/Sample ID : Trompeto 1
 Vol. Inyección/Injection Vol.: 2.000
 Archivo/Data File : C:\GCMSsolution\Data\CENIVAM\Trompeto\Trompeto 1.qgd
 Método/Method File : C:\GCMSsolution\Data\CENIVAM\linas\Justi\ESTEROIDESLINAS.qgm
 Tuning File : C:\GCMSsolution\System\Tune1\CPN-SEI10260CLOSE20070222.qgt
 Descripción muestra/Sample Descr. : Trompeto EtOAc



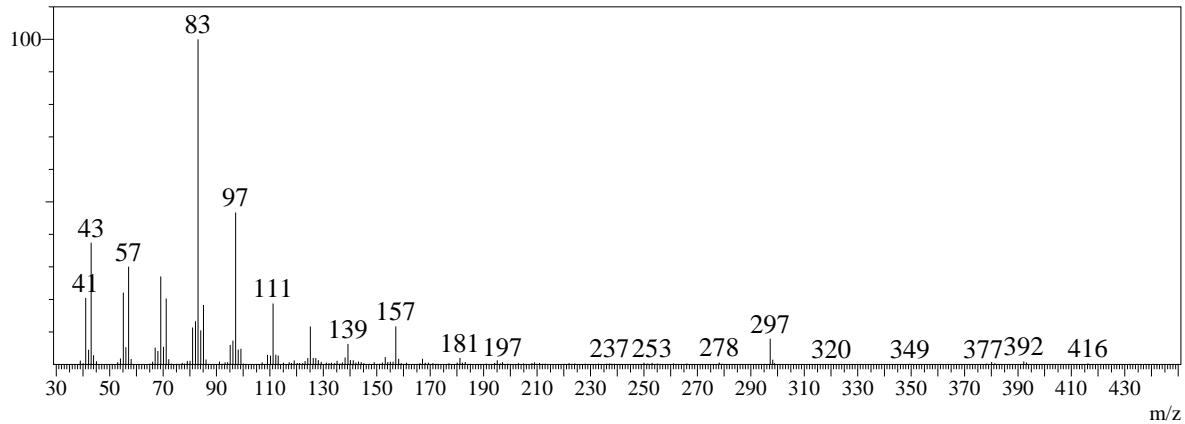
Quantitative Result Table

ID#	R.Time	Name	m/z	Area	Conc.	ilarity
1	4.368	10-Nonadecanol	83	16427205	0.0	99
2	5.494	3a,4,5,5b,7a,12a,12b,13,14,14a,14b-dodecahydro-13-methyl[1,3]b	333	25001221	0.0	90
3	5.633	[1,3]Benzodioxolo[5,6-c]phenanthridine, 12,13-dihydro-2,3-dime	349	5421976	0.0	68
4	5.776	TRANS-STIGMASTA-5,22-DIEN-3.BETA.-OL	83	1869872	0.0	98
5	6.107	.gamma.-Sitosterol	43	3043184	0.0	95
6	6.705	3,4-bis(methoxycarbonyl)-2,6-diphenylpyridine	332	18026643	0.0	95
7	7.423	[1,3]Benzodioxolo[5,6-c]-1,3-dioxolo[4,5-i]phenanthridine	317	87103153	0.0	93
8	7.666	Demethylchelerythrine	333	38208821	0.0	67
9	7.800	Pregn-20-yn-17-ol, (5.beta.,17.alpha.)-	150	5800377	0.0	47
10	7.922	Stigmast-4-en-3-one (CAS)	124	3069265	0.0	62
11	8.486	Betulin	189	2529629	0.0	92
12	9.191	A'-Neogammacer-22(29)-en-3-one	189	10244950	0.0	93
13	9.362	1-Naphthalenepropanol, .alpha.-ethenyldecahydro-2-hydroxy-.alp	81	3308737	0.0	83

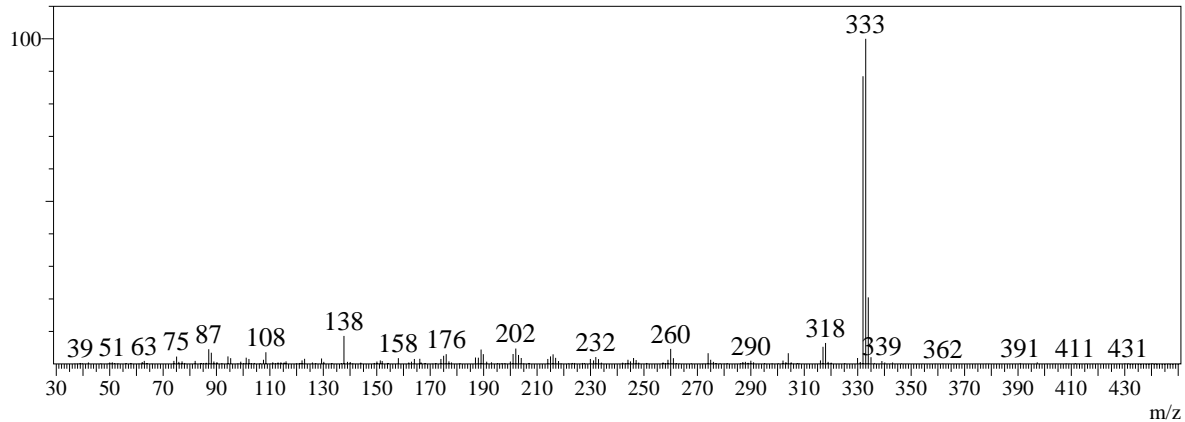
**UNIVERSIDAD TECNOLÓGICA DE PEREIRA**
GRUPO POLIFENÓLES UTP**LABORATORIO DE CALIDAD DE PRODUCTOS NATURALES**

Spectrum

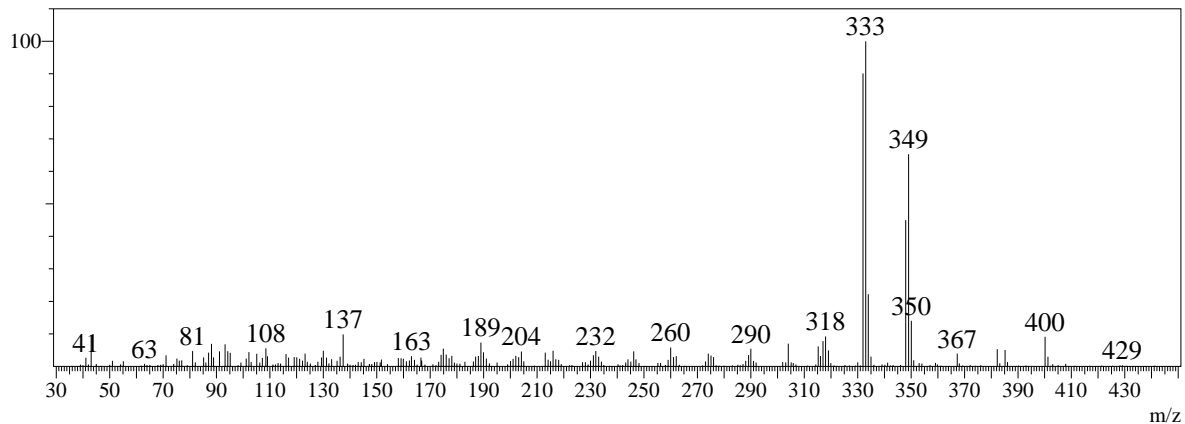
ID#:1 R.Time:4.4(Scan#:53)
MassPeaks:381
RawMode:Averaged 4.4-4.4(52-54)
BG Mode:Calc. from Peak



ID#:2 R.Time:5.5(Scan#:121)
MassPeaks:311
RawMode:Averaged 5.5-5.5(120-122)
BG Mode:Calc. from Peak



ID#:3 R.Time:5.6(Scan#:129)
MassPeaks:392
RawMode:Averaged 5.6-5.7(128-130)
BG Mode:Calc. from Peak





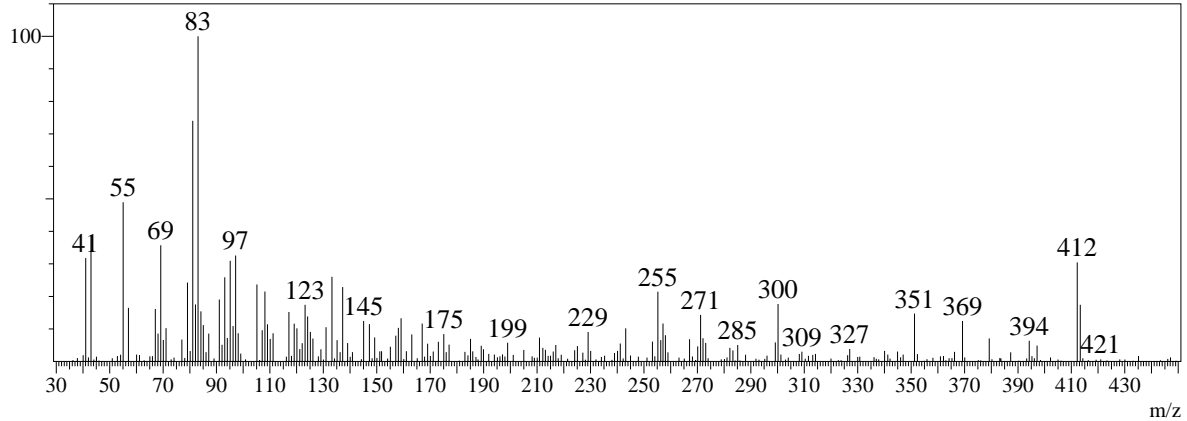
UNIVERSIDAD TECNOLÓGICA DE PEREIRA
GRUPO POLIFENÓLES UTP



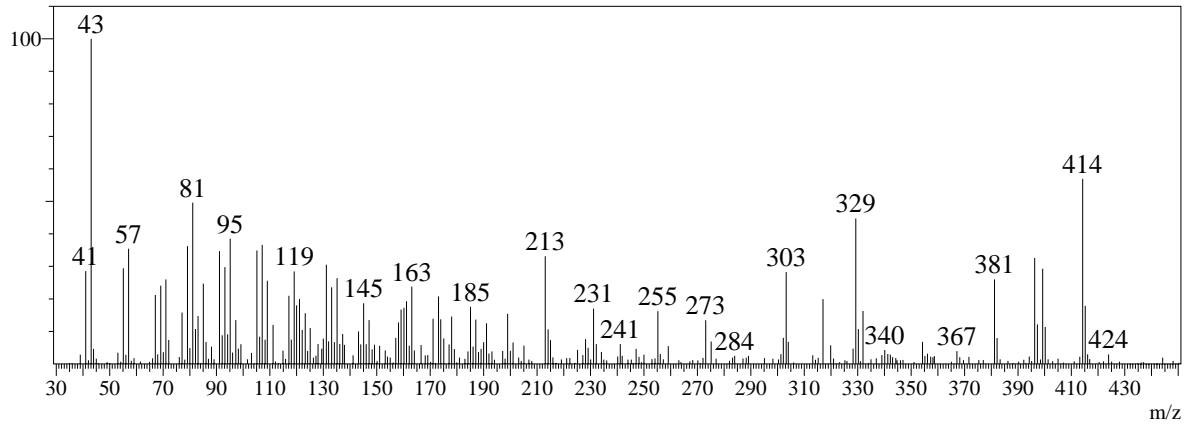
LABORATORIO DE CALIDAD DE PRODUCTOS NATURALES

Spectrum

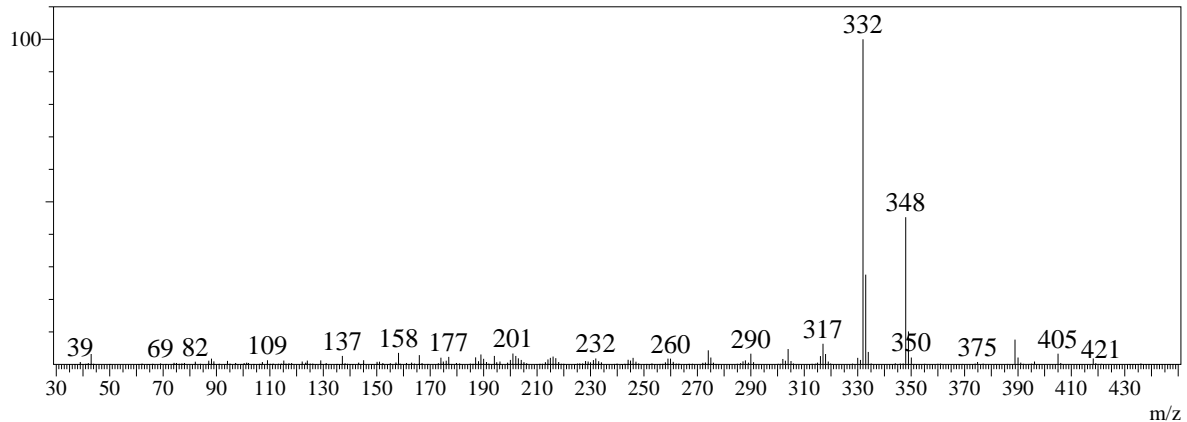
ID#:4 R.Time:5.8(Scan#:138)
 MassPeaks:381
 RawMode:Averaged 5.8-5.8(137-139)
 BG Mode:Calc. from Peak



ID#:5 R.Time:6.1(Scan#:157)
 MassPeaks:393
 RawMode:Averaged 6.1-6.1(156-158)
 BG Mode:Calc. from Peak



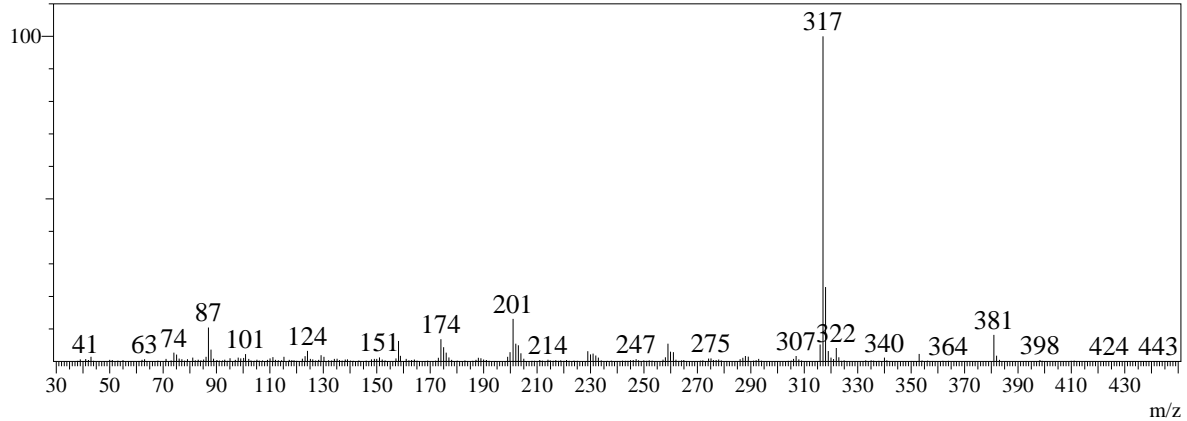
ID#:6 R.Time:6.7(Scan#:193)
 MassPeaks:372
 RawMode:Averaged 6.7-6.7(192-194)
 BG Mode:Calc. from Peak



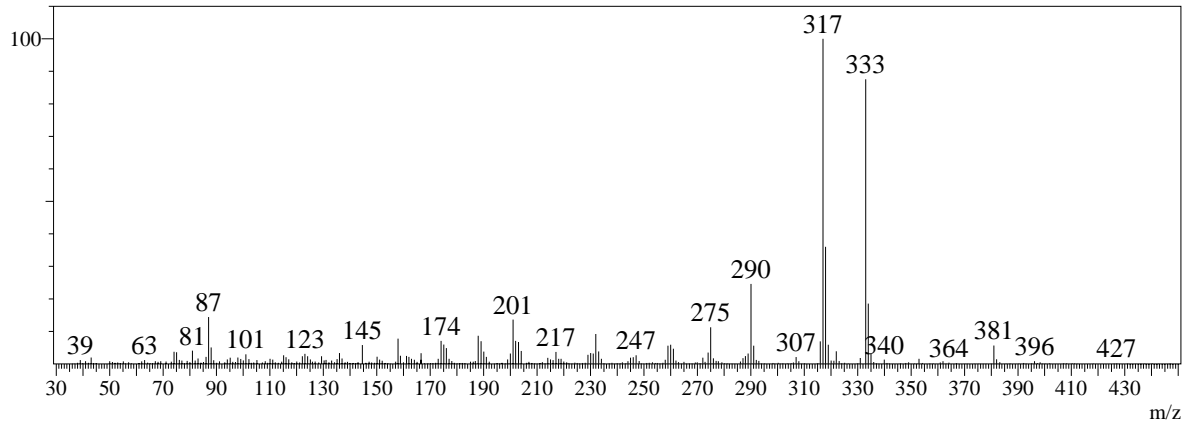
**UNIVERSIDAD TECNOLÓGICA DE PEREIRA**
GRUPO POLIFENOLES UTP**LABORATORIO DE CALIDAD DE PRODUCTOS NATURALES**

Spectrum

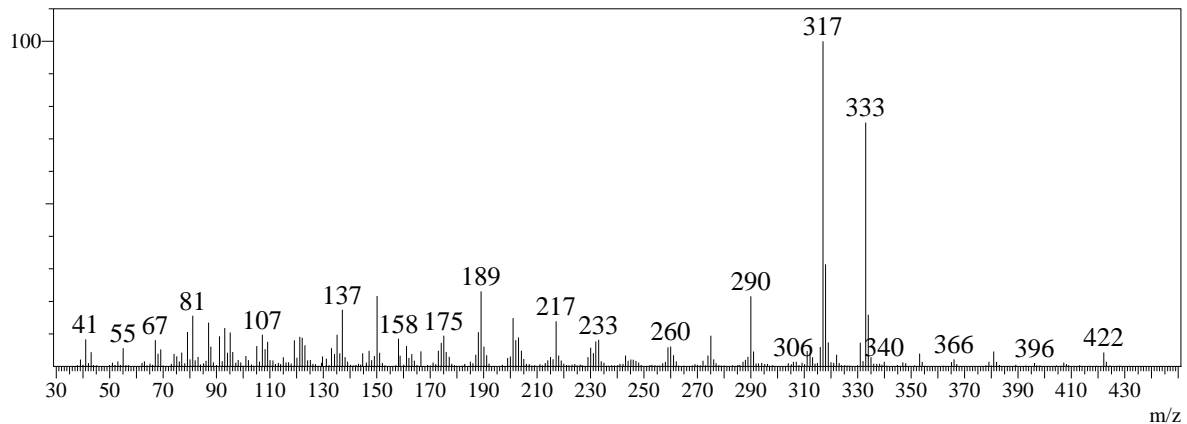
ID#:7 R.Time:7.4(Scan#:236)
MassPeaks:455
RawMode:Averaged 7.4-7.4(235-237)
BG Mode:Calc. from Peak



ID#:8 R.Time:7.7(Scan#:251)
MassPeaks:459
RawMode:Averaged 7.7-7.7(250-252)
BG Mode:Calc. from Peak



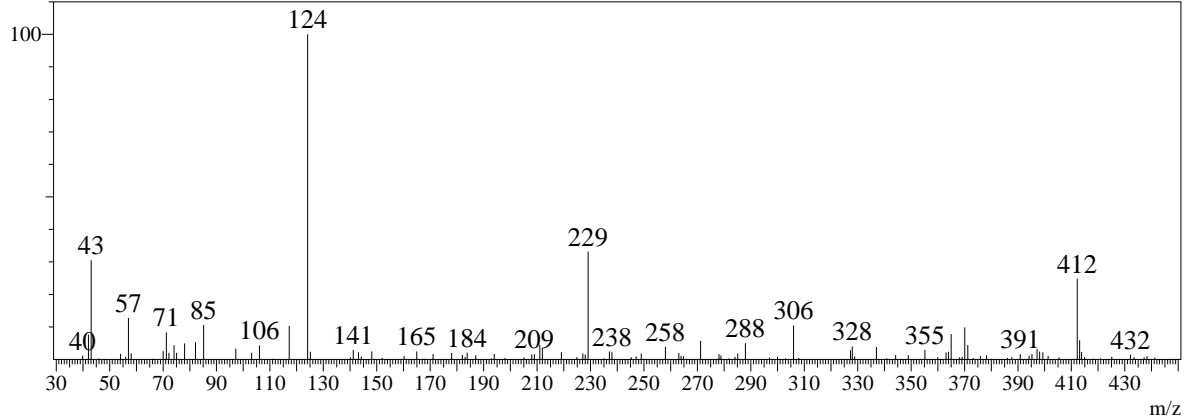
ID#:9 R.Time:7.8(Scan#:259)
MassPeaks:479
RawMode:Averaged 7.8-7.8(258-260)
BG Mode:Calc. from Peak



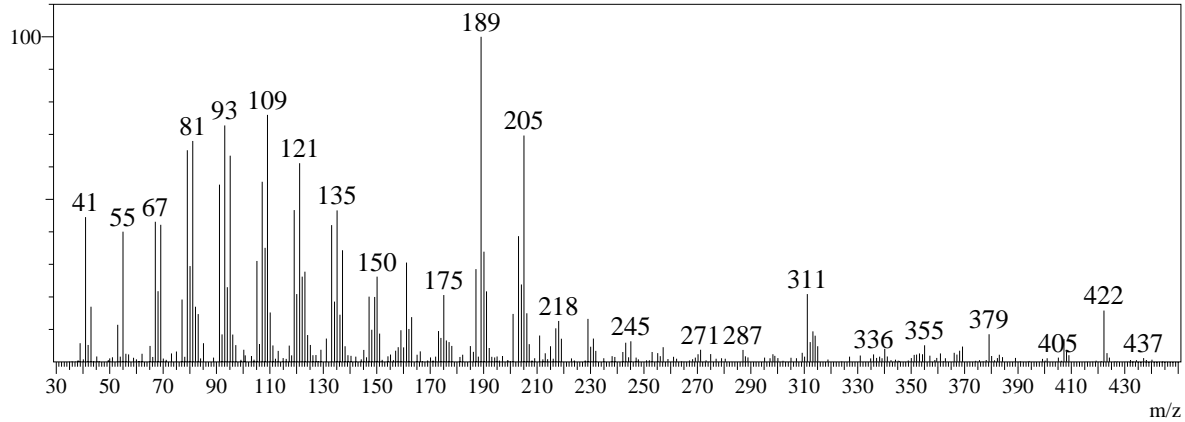
**UNIVERSIDAD TECNOLÓGICA DE PEREIRA**
GRUPO POLIFENÓLES UTP**LABORATORIO DE CALIDAD DE PRODUCTOS NATURALES**

Spectrum

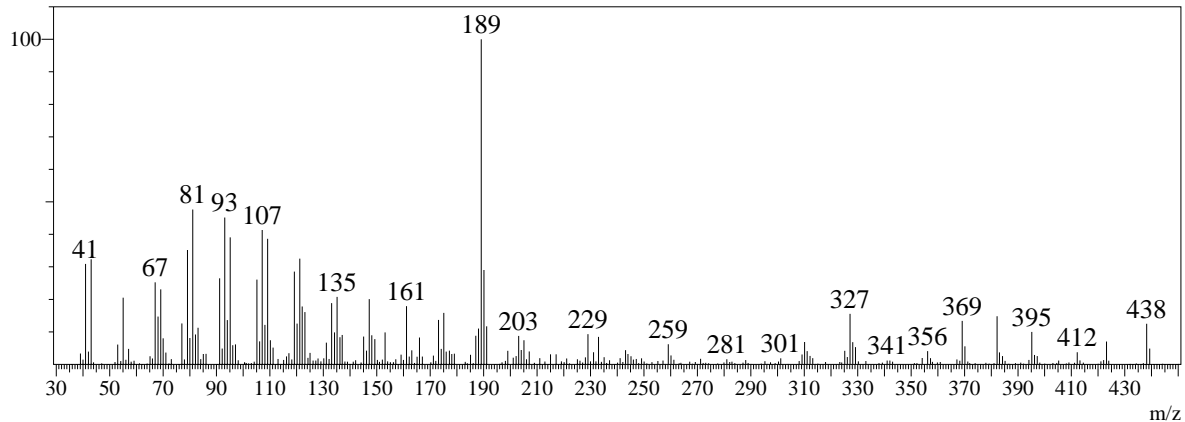
ID#:10 R.Time:7.9(Scan#:266)
MassPeaks:238
RawMode:Averaged 7.9-7.9(265-267)
BG Mode:Calc. from Peak



ID#:11 R.Time:8.5(Scan#:300)
MassPeaks:389
RawMode:Averaged 8.5-8.5(299-301)
BG Mode:Calc. from Peak



ID#:12 R.Time:9.2(Scan#:342)
MassPeaks:426
RawMode:Averaged 9.2-9.2(341-343)
BG Mode:Calc. from Peak





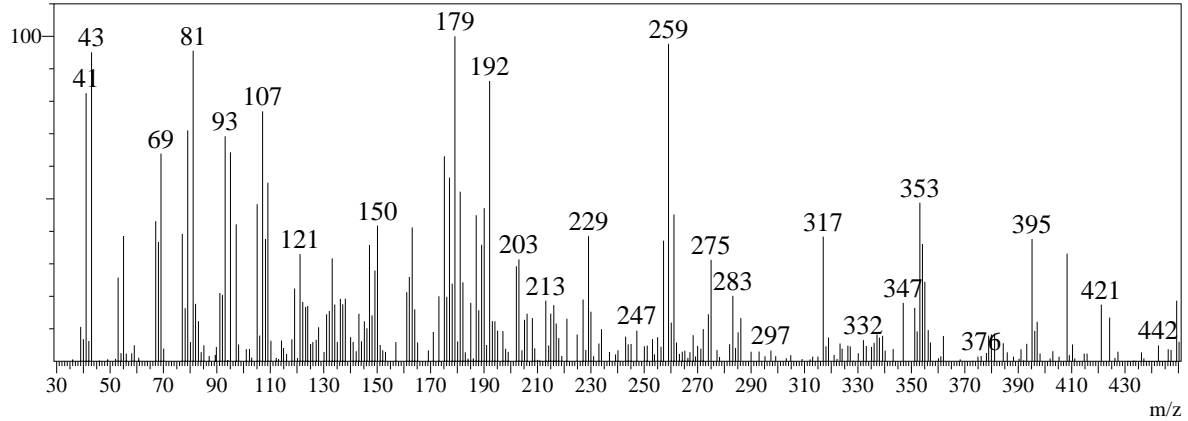
UNIVERSIDAD TECNOLÓGICA DE PEREIRA
GRUPO POLIFENÓLES UTP



LABORATORIO DE CALIDAD DE PRODUCTOS NATURALES

Spectrum

ID#:13 R.Time:9.4(Scan#:353)
MassPeaks:377
RawMode:Averaged 9.3-9.4(352-354)
BG Mode:Calc. from Peak





UNIVERSIDAD TECNOLÓGICA DE PEREIRA

GRUPO POLIFENÓLES UTP

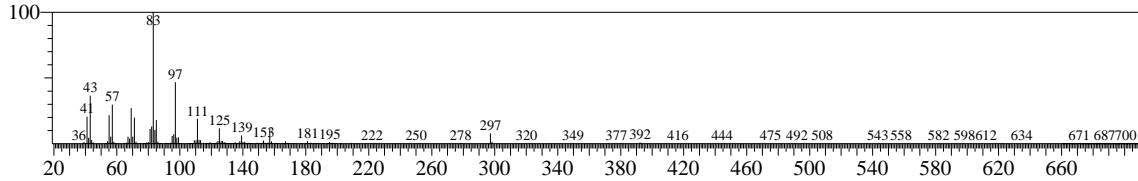


LABORATORIO DE CALIDAD DE PRODUCTOS NATURALES

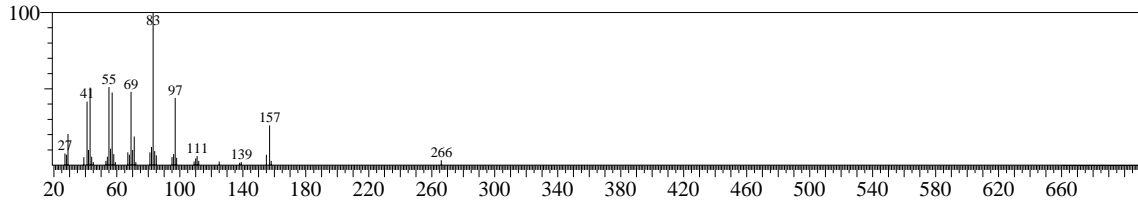
Library

<< Target >>

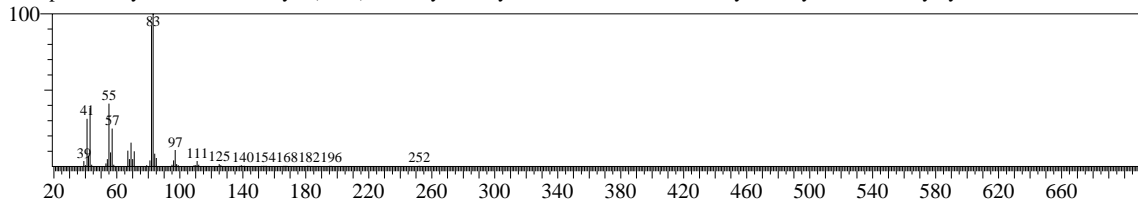
Line#:1 R.Time:4.367(Scan#:53) MassPeaks:385
 RawMode:Averaged 4.350-4.383(52-54) BasePeak:83.10(2493063)
 BG Mode:Calc. from Peak



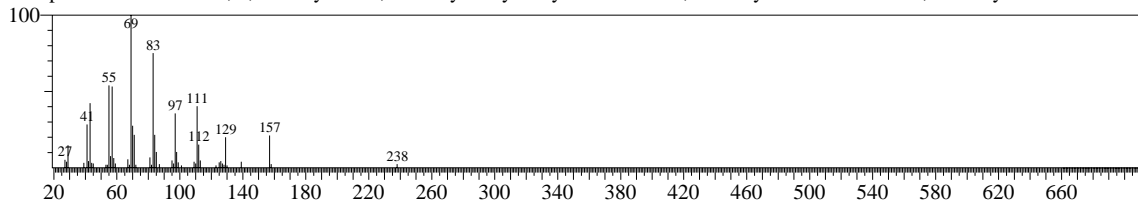
Hit#:1 Entry:260139 Library:WILEY7N2.LIB
 SI:86 Formula:C19H40O CAS:16840-84-9 MolWeight:284 RetIndex:0
 CompName:10-Nonadecanol



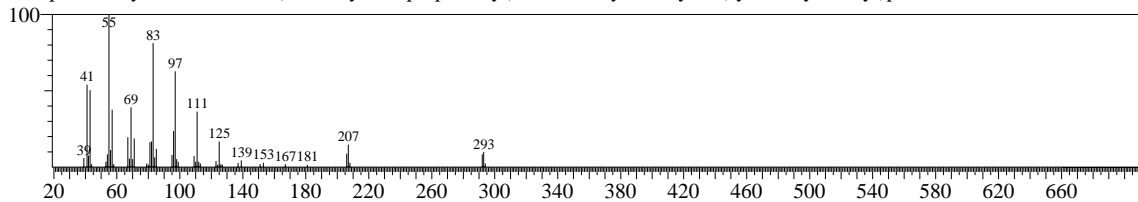
Hit#:2 Entry:353516 Library:WILEY7N2.LIB
 SI:81 Formula:C26H52 CAS:4443-55-4 MolWeight:364 RetIndex:0
 CompName:Cyclohexane, eicosyl- (CAS) \$\$ 1-Cyclohexyleicosane \$\$ Eicosane, 1-cyclohexyl- \$\$ n-Eicosylcyclohexane



Hit#:3 Entry:218295 Library:WILEY7N2.LIB
 SI:81 Formula:C17H36O CAS:123-24-0 MolWeight:256 RetIndex:0
 CompName:6-Tridecanol, 3,9-diethyl- \$\$ 3,9-Diethyl-6-hydroxytridecane \$\$ 3,9-Diethyl-6-tridecanol \$\$ 3,9-Diethyltridecanol-6

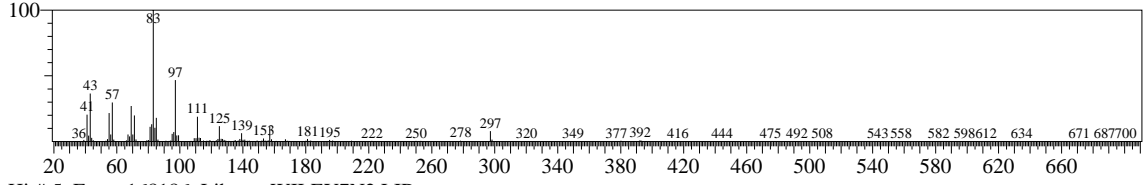


Hit#:4 Entry:373835 Library:WILEY7N2.LIB
 SI:81 Formula:C28H54 CAS:55255-74-8 MolWeight:390 RetIndex:0
 CompName:Cyclohexane, 1,1'-(2-tridecyl-1,3-propanediyl)bis- \$\$ 1-Cyclohexyl-2-(cyclohexylmethyl)pentadecane

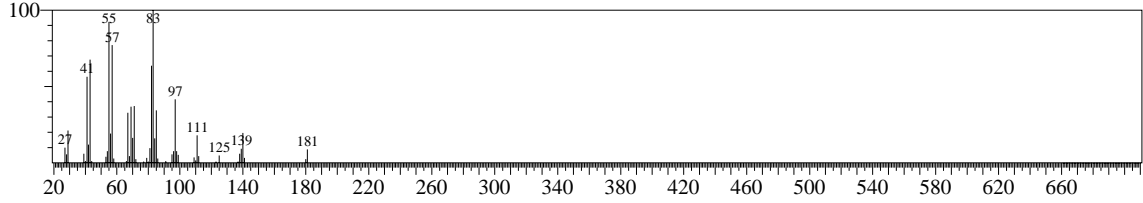


<< Target >>

Line#:1 R.Time:4.367(Scan#:53) MassPeaks:385
RawMode:Averaged 4.350-4.383(52-54) BasePeak:83.10(2493063)
BG Mode:Calc. from Peak

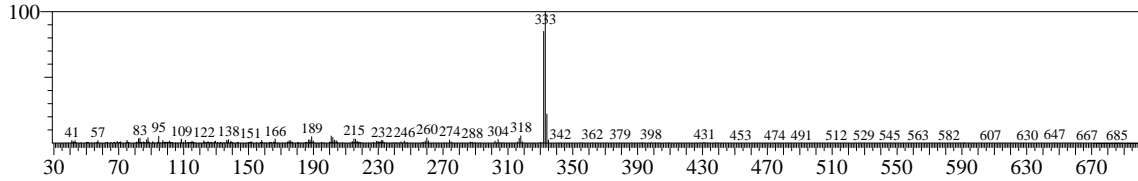


Hit#:5 Entry:168186 Library:WILEY7N2.LIB
SI:81 Formula:C16H32 CAS:13151-75-2 MolWeight:224 RetIndex:0
CompName:Decane, 4-cyclohexyl- (1-Propylheptyl)cyclohexane #

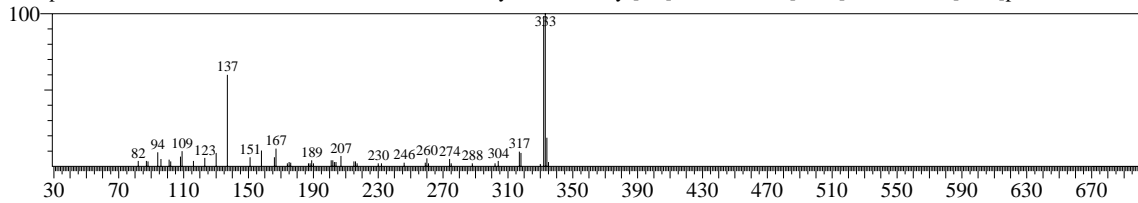


<< Target >>

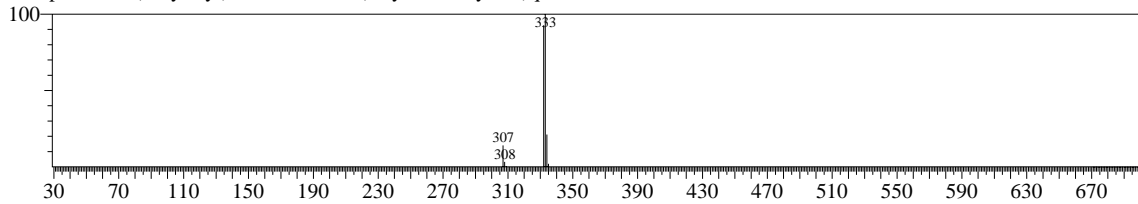
Line#:2 R.Time:5.400(Scan#:115) MassPeaks:358
 RawMode:Averaged 5.383-5.417(114-116) BasePeak:333.00(990597)
 BG Mode:Calc. from Peak



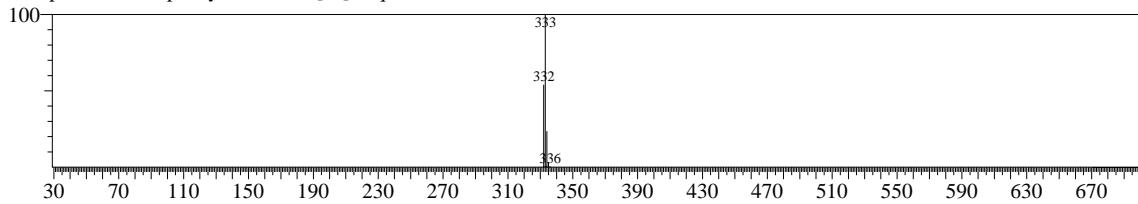
Hit#:1 Entry:324842 Library:WILEY7N2.LIB
 SI:81 Formula:C20H17NO4 CAS:0-0-0 MolWeight:335 RetIndex:0
 CompName:3a,4,5,5b,7a,12a,12b,13,14,14a,14b-dodecahydro-13-methyl[1,3]benzodioxolo[5,6-c]-1,3-dioxolo[4,5-i]phenanthridine



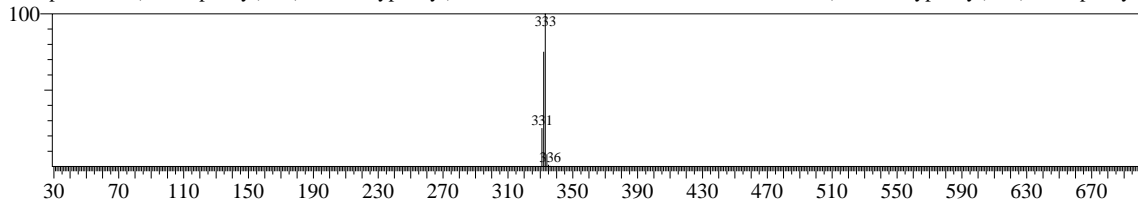
Hit#:2 Entry:322585 Library:WILEY7N2.LIB
 SI:74 Formula:C19H7N7 CAS:0-0-0 MolWeight:333 RetIndex:0
 CompName:2-(2-Pyridyl)-5H,8H-5,8-bis(dicyanomethylene)quinoxaline



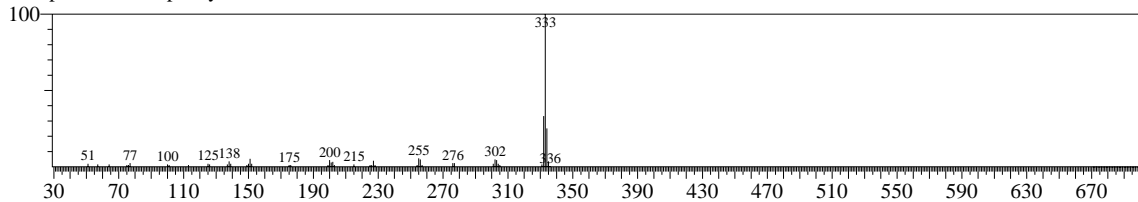
Hit#:3 Entry:325041 Library:WILEY7N2.LIB
 SI:72 Formula:C24H17NO CAS:120742-88-3 MolWeight:335 RetIndex:0
 CompName:1,3-diphenyl-6H-benzo[de]isoquinolin-6-one



Hit#:4 Entry:320863 Library:WILEY7N2.LIB
 SI:70 Formula:C15H12N2O3S2 CAS:131085-89-7 MolWeight:332 RetIndex:0
 CompName:3-(4-nitrophenyl)-5-(4-methoxyphenyl)-5H-1,4,2-dithiazole \$S\$ 1,4,2-Dithiazole, 5-(4-methoxyphenyl)-3-(4-nitrophenyl)

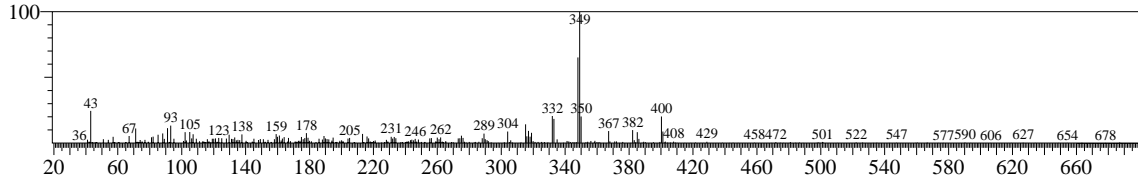


Hit#:5 Entry:322922 Library:WILEY7N2.LIB
 SI:67 Formula:C24H15NO CAS:0-0-0 MolWeight:333 RetIndex:0
 CompName:1,3-diphenyl-2-azafluorenone

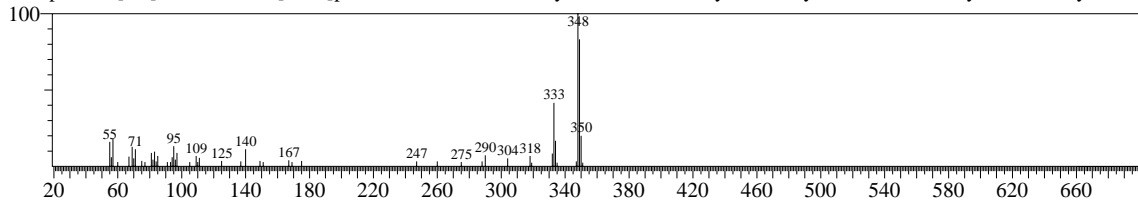


<< Target >>

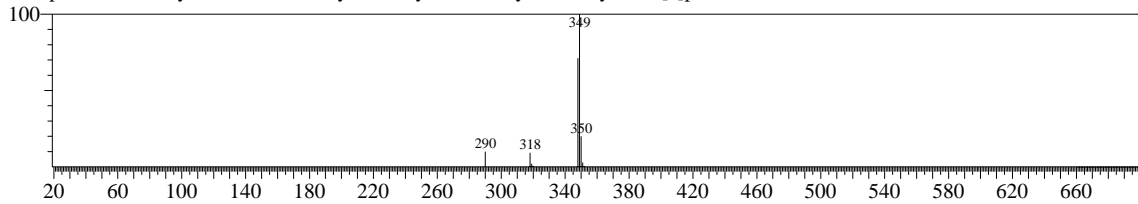
Line# 3 R.Time:5.650(Scan#:130) MassPeaks:362
RawMode:Averaged 5.633-5.667(129-131) BasePeak:349.05(268902)
BG Mode:Calc. from Peak



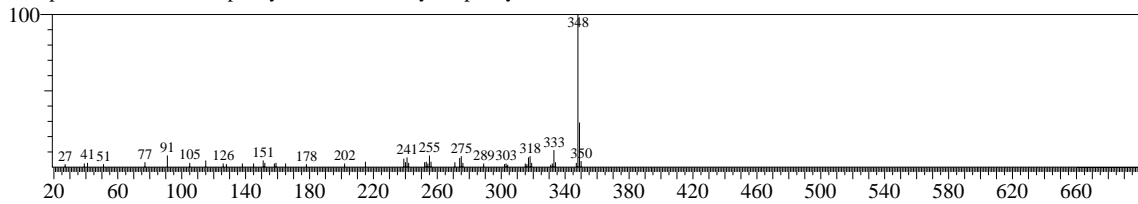
Hit# 1 Entry:339278 Library:WILEY7N2.LIB
SI:55 Formula:C₂₁H₁₉NO₄ CAS:13063-6-4 MolWeight:349 RetIndex:0
CompName:[1,3]Benzodioxolo[5,6-c]phenanthridine, 12,13-dihydro-2,3-dimethoxy-12-methyl- \$\$ Nitidine, dihydro- \$\$ Dihydronti



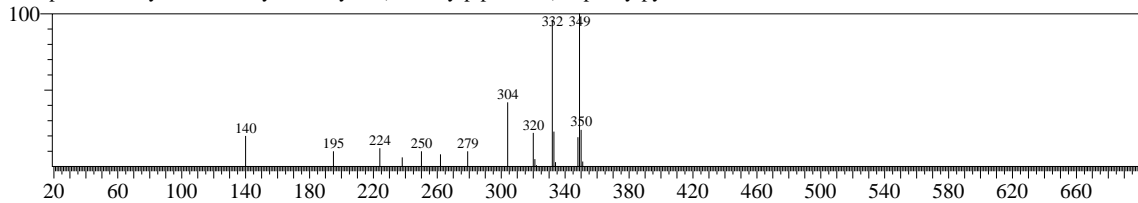
Hit# 2 Entry:339284 Library:WILEY7N2.LIB
SI:51 Formula:C₂₁H₁₉NO₄ CAS:6880-91-7 MolWeight:349 RetIndex:0
CompName:5,6-dihydro-7,8-dimethoxy-5-methyl-2,3-methylenedioxybenzo[c]phenanthridine



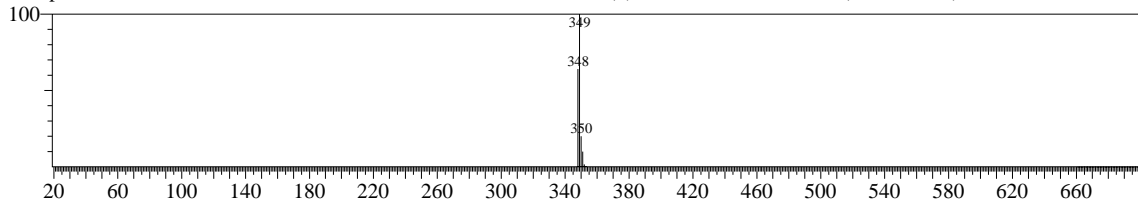
Hit# 3 Entry:338834 Library:WILEY7N2.LIB
SI:49 Formula:C₂₇H₂₄ CAS:6231-26-1 MolWeight:348 RetIndex:0
CompName:1,1':3',1''-Terphenyl, 2',4',6'-trimethyl-5'-phenyl-



Hit# 4 Entry:339313 Library:WILEY7N2.LIB
SI:49 Formula:C₂₁H₂₃N₃O₂ CAS:0-0-0 MolWeight:349 RetIndex:0
CompName:3-Cyano-2-ethoxy-5-formyl-6-(4-methylpiperidino)-4-phenylpyridine

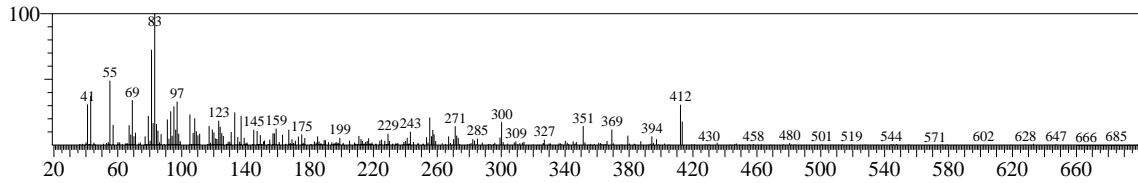


Hit# 5 Entry:339139 Library:WILEY7N2.LIB
SI:49 Formula:C₁₉H₁₁NO₂S₂ CAS:61446-8-0 MolWeight:349 RetIndex:0
CompName:12-METHYL-11,13-DIOXO-12,13-DIHYDRO-11H-BIS(1)BENZOTHIOPYRANO(3,2-B:2,3-D)PYRROLE

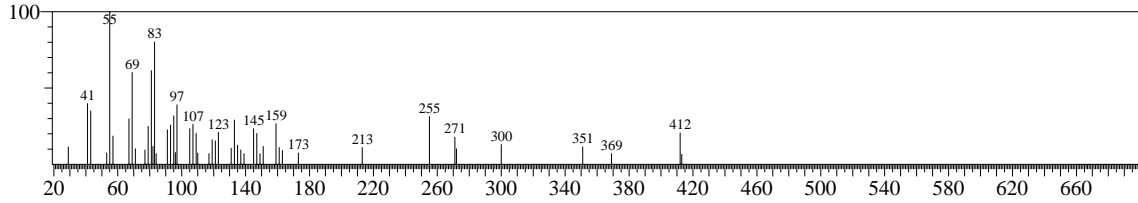


<< Target >>

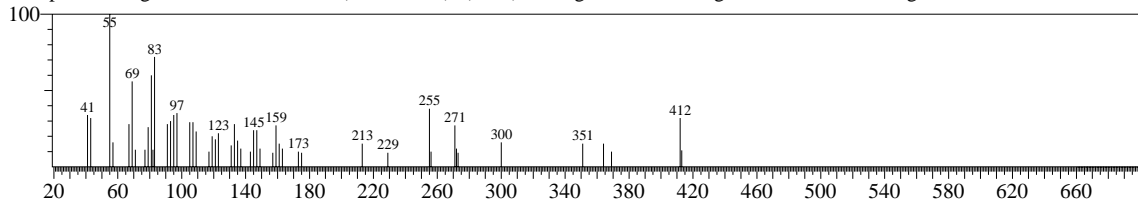
Line#4 R.Time:5.783(Scan#:138) MassPeaks:370
RawMode:Averaged 5.767-5.800(137-139) BasePeak:83.10(180107)
BG Mode:Calc. from Peak



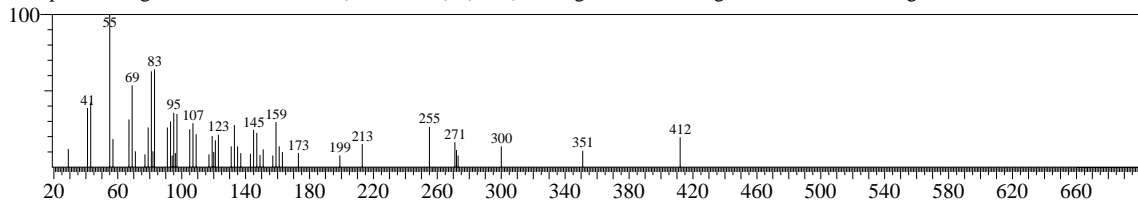
Hit#1 Entry:386972 Library:WILEY7N2.LIB
SI:79 Formula:C29H48O CAS:83-48-7 MolWeight:412 RetIndex:0
CompName:TRANS-STIGMASTA-5,22-DIEN-3.BETA.-OL



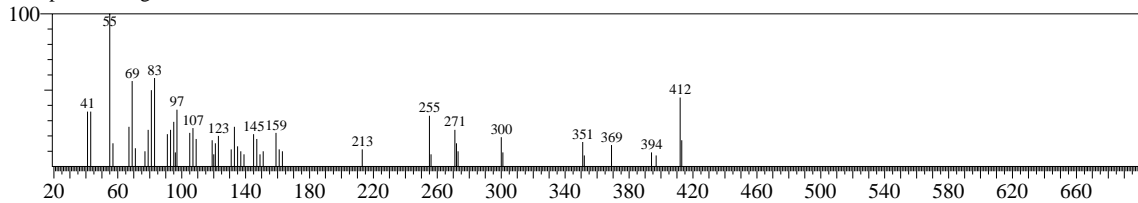
Hit#2 Entry:386975 Library:WILEY7N2.LIB
SI:77 Formula:C29H48O CAS:83-48-7 MolWeight:412 RetIndex:0
CompName:Stigmasta-5,22-dien-3-ol, (3.beta.,22E)- (CAS) \$\$ Stigmasterol \$\$ Stigmasterin \$\$.beta.-Stigmasterol



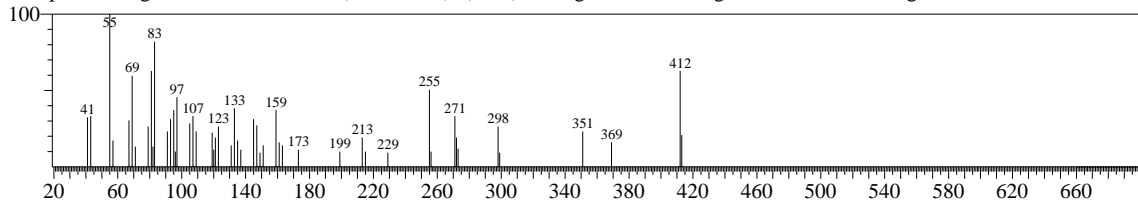
Hit#3 Entry:386974 Library:WILEY7N2.LIB
SI:77 Formula:C29H48O CAS:83-48-7 MolWeight:412 RetIndex:0
CompName:Stigmasta-5,22-dien-3-ol, (3.beta.,22E)- (CAS) \$\$ Stigmasterol \$\$ Stigmasterin \$\$.beta.-Stigmasterol



Hit#4 Entry:386978 Library:WILEY7N2.LIB
SI:76 Formula:C29H48O CAS:83-48-7 MolWeight:412 RetIndex:0
CompName:Stigmasterol

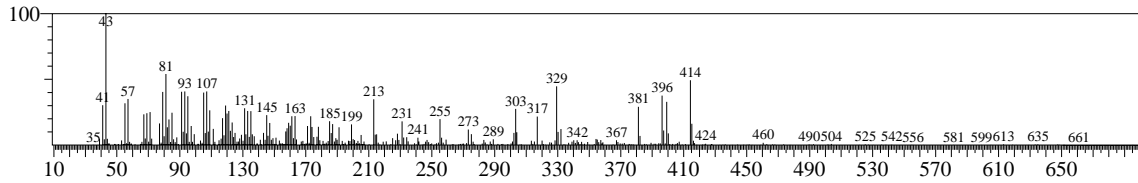


Hit#5 Entry:386976 Library:WILEY7N2.LIB
SI:74 Formula:C29H48O CAS:83-48-7 MolWeight:412 RetIndex:0
CompName:Stigmasta-5,22-dien-3-ol, (3.beta.,22E)- (CAS) \$\$ Stigmasterol \$\$ Stigmasterin \$\$.beta.-Stigmasterol

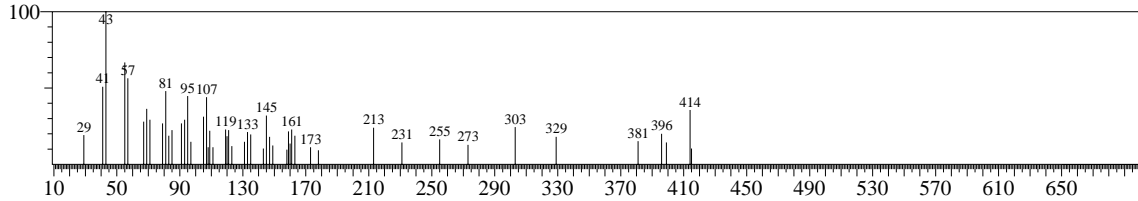


<< Target >>

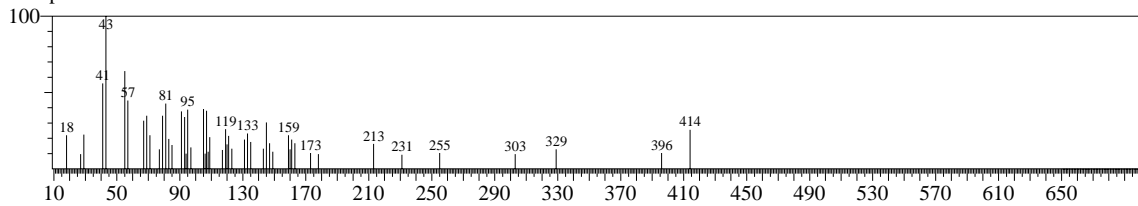
Line#5 R.Time:6.117(Scan#:158) MassPeaks:391
RawMode:Averaged 6.100-6.133(157-159) BasePeak:43.05(181222)
BG Mode:Calc. from Peak



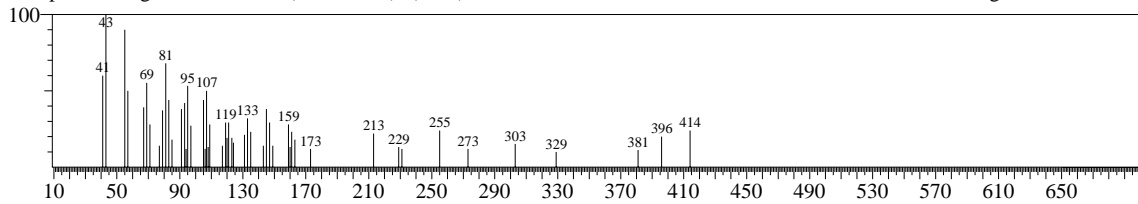
Hit#1 Entry:388341 Library:WILEY7N2.LIB
SI:86 Formula:C29H50O CAS:83-47-6 MolWeight:414 RetIndex:0
CompName:.gamma.-Sitosterol \$\$ Stigmast-5-en-3-ol, (3.beta.,24S)- \$\$ Stigmast-5-en-3.beta.-ol, (24S)- \$\$ Clionasterol



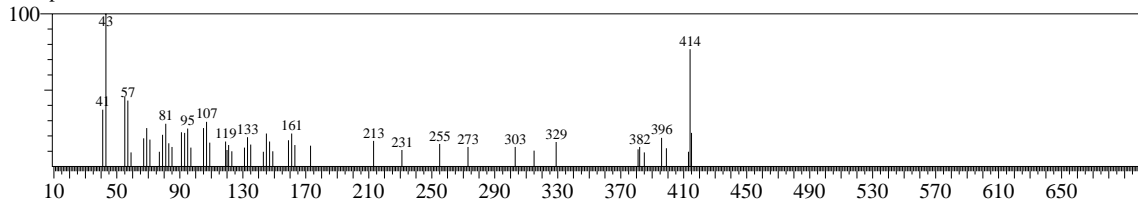
Hit#2 Entry:388335 Library:WILEY7N2.LIB
SI:84 Formula:C29H50O CAS:83-46-5 MolWeight:414 RetIndex:0
CompName:.beta.-Sitosterol



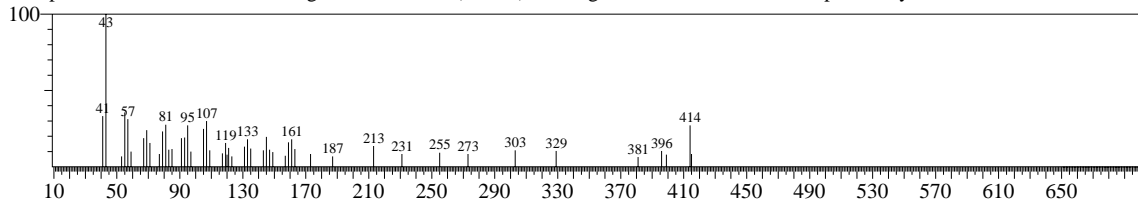
Hit#3 Entry:388343 Library:WILEY7N2.LIB
SI:83 Formula:C29H50O CAS:83-47-6 MolWeight:414 RetIndex:0
CompName:Stigmast-5-en-3-ol, (3.beta.,24S)- (CAS) \$\$ Clionasterol \$\$ 24S-STIGMAST-5-EN-3.BETA.-OL \$\$.gamma.-Sitostero



Hit#4 Entry:388334 Library:WILEY7N2.LIB
SI:82 Formula:C29H50O CAS:83-46-5 MolWeight:414 RetIndex:0
CompName:.beta.-Sitosterol

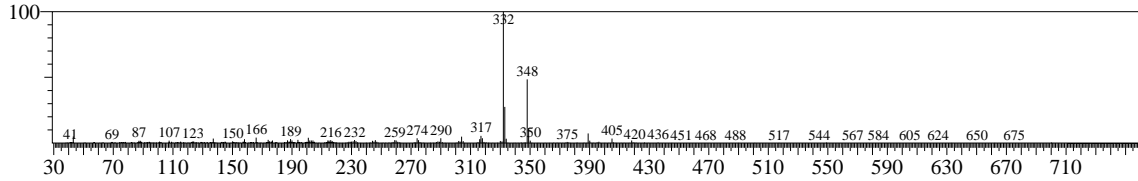


Hit#5 Entry:388333 Library:WILEY7N2.LIB
SI:81 Formula:C29H50O CAS:83-46-5 MolWeight:414 RetIndex:0
CompName:.beta.-Sitosterol \$\$ Stigmast-5-en-3-ol, (3.beta.-) \$\$ Stigmast-5-en-3.beta.-ol \$\$.alpha.-Dihydrofucosterol

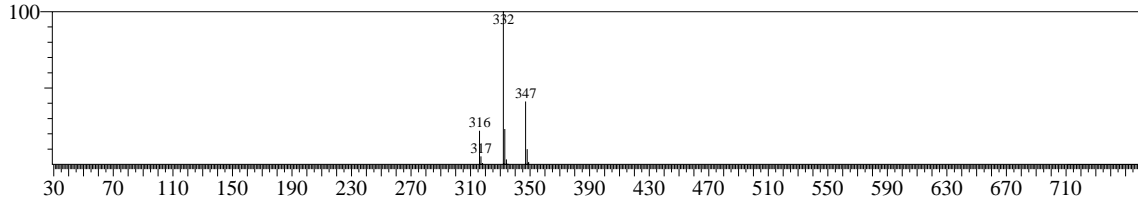


<< Target >>

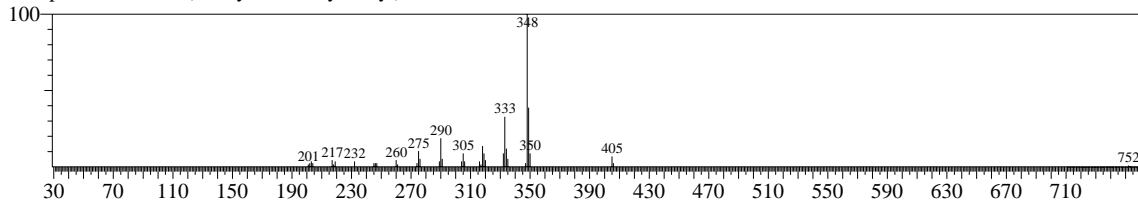
Line#6 R.Time:6.717(Scan#:194) MassPeaks:405
 RawMode:Averaged 6.700-6.733(193-195) BasePeak:332.00(1798748)
 BG Mode:Calc. from Peak



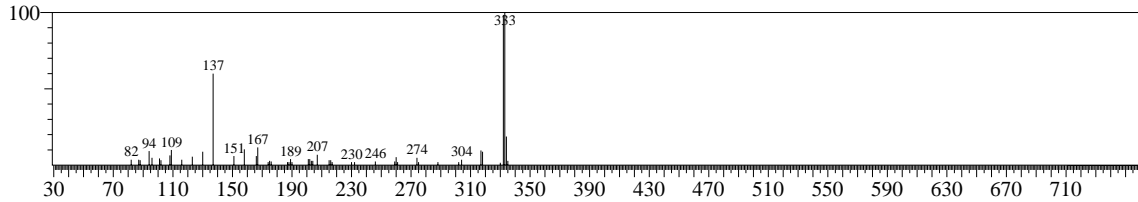
Hit#1 Entry:337243 Library:WILEY7N2.LIB
 SI:65 Formula:C₂₁H₁₇NO₄ CAS:87444-84-6 MolWeight:347 RetIndex:0
 CompName:3,4-bis(methoxycarbonyl)-2,6-diphenylpyridine \$\$ 3,4-Pyridinedicarboxylic acid, 2,6-diphenyl-, dimethyl ester (CAS)



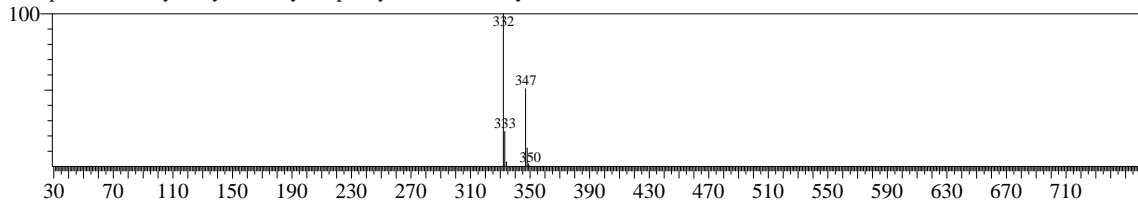
Hit#2 Entry:439162 Library:WILEY7N2.LIB
 SI:63 Formula:C₄₅H₄₀N₂O₉ CAS:0-0-0 MolWeight:752 RetIndex:0
 CompName:1,3-Bis-(11-Hydrochelerythrinyl)-Acetone



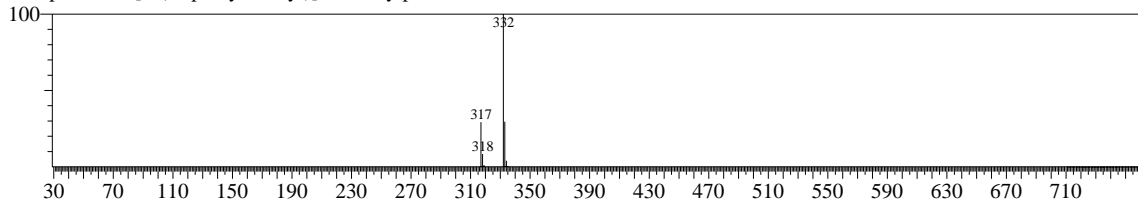
Hit#3 Entry:324842 Library:WILEY7N2.LIB
 SI:63 Formula:C₂₀H₁₇NO₄ CAS:0-0-0 MolWeight:335 RetIndex:0
 CompName:3a,4,5,5b,7a,12a,12b,13,14,14a,14b-dodecahydro-13-methyl[1,3]benzodioxolo[5,6-c]-1,3-dioxolo[4,5-i]phenanthridine



Hit#4 Entry:337241 Library:WILEY7N2.LIB
 SI:62 Formula:C₂₁H₁₇NO₄ CAS:56782-65-1 MolWeight:347 RetIndex:0
 CompName:t-4-Hydroxy-4-methyl-N-phenyl-1,2,3,4-tetrahydrodibenzofuran-r-1,c-2-dicarboxamide

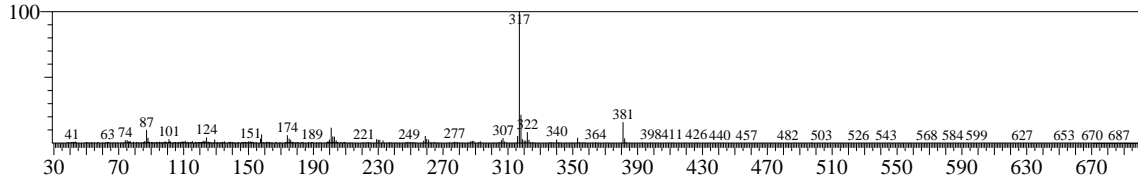


Hit#5 Entry:322168 Library:WILEY7N2.LIB
 SI:62 Formula:C₂₆H₂₀ CAS:0-0-0 MolWeight:332 RetIndex:0
 CompName:4-[2-(Naphthylmethyl)]-2-methylphenanthrene



<< Target >>

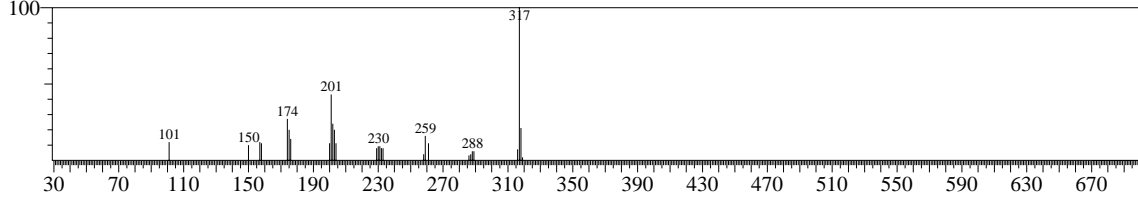
Line#:7 R.Time:7.450(Scan#:238) MassPeaks:454
RawMode:Averaged 7.433-7.467(237-239) BasePeak:317.00(2591302)
BG Mode:Calc. from Peak



Hit#:1 Entry:303832 Library:WILEY7N2.LIB

SI:70 Formula:C19H11NO4 CAS:522-30-5 MolWeight:317 RetIndex:0

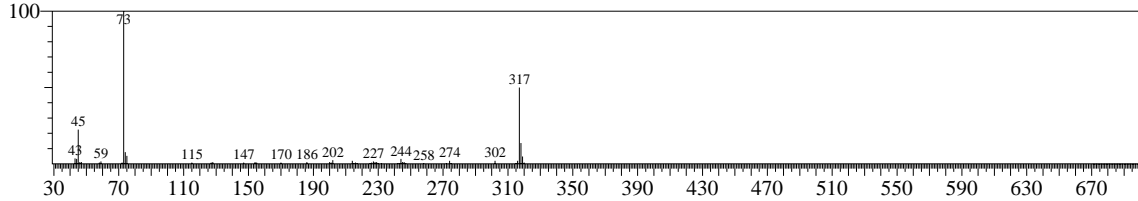
CompName:[1,3]Benzodioxolo[5,6-c]-1,3-dioxolo[4,5-i]phenanthridine \$\$ Norsanguinarine \$\$ Sanguinarine, 13-demethyl-



Hit#:2 Entry:303720 Library:WILEY7N2.LIB

SI:61 Formula:C17H27NOSi2 CAS:74367-61-6 MolWeight:317 RetIndex:0

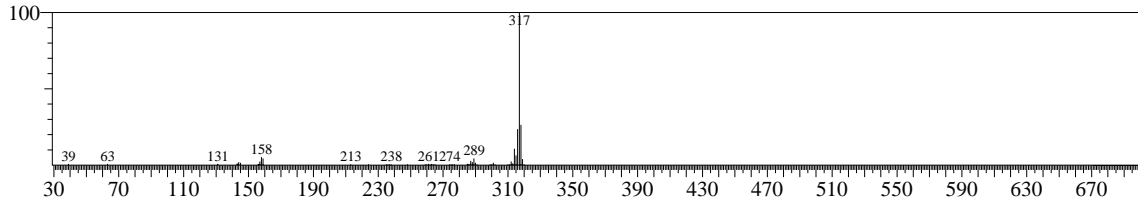
CompName:1H-Indole, 1-(trimethylsilyl)-3-[2-[(trimethylsilyl)oxy]-1-propenyl]-



Hit#:3 Entry:304058 Library:WILEY7N2.LIB

SI:60 Formula:C24H15N CAS:17182-0-2 MolWeight:317 RetIndex:0

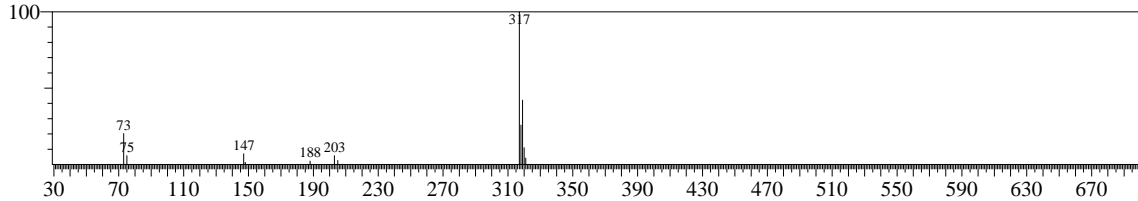
CompName:7H-Benzo[g]naphtho[2,3-b]carbazole



Hit#:4 Entry:361242 Library:WILEY7N2.LIB

SI:60 Formula:C16H31ClN2O2Si2 CAS:0-0-0 MolWeight:374 RetIndex:0

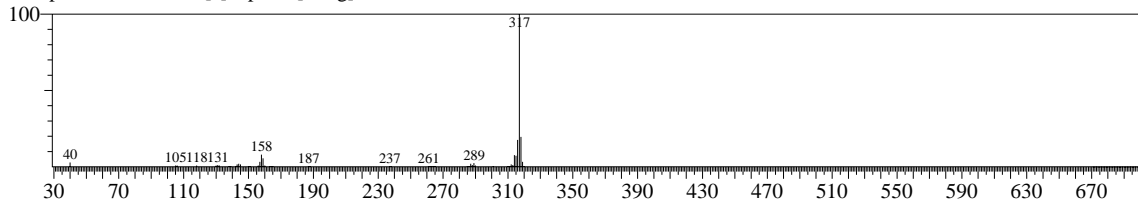
CompName:N,N-di(t-butyl)dimethylsilyl)-5-chlorouracyl



Hit#:5 Entry:304059 Library:WILEY7N2.LIB

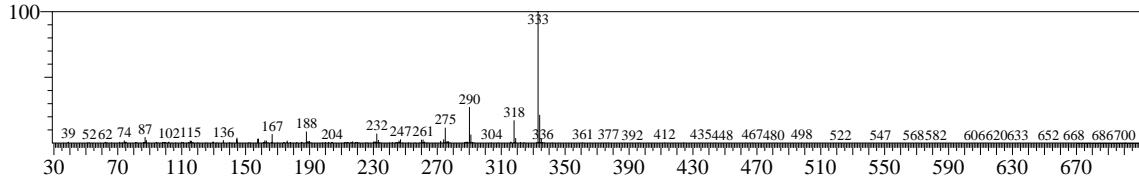
SI:60 Formula:C24H15N CAS:17182-2-4 MolWeight:317 RetIndex:0

CompName:7H-Benzo[c]naphtho[2,3-g]carbazole

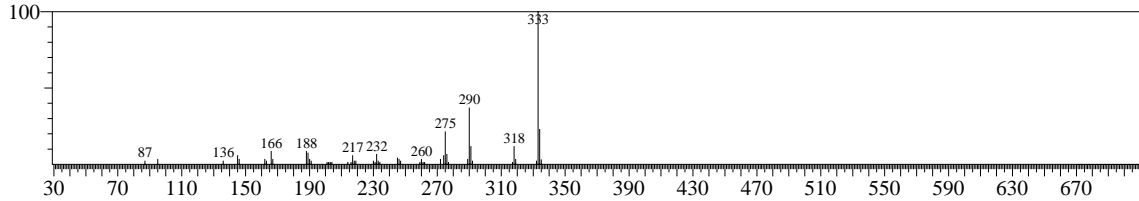


<< Target >>

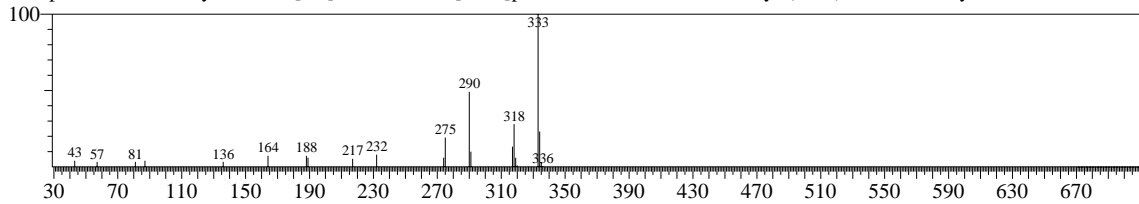
Line#:8 R.Time:7.633(Scan#:249) MassPeaks:303
 RawMode:Averaged 7.617-7.650(248-250) BasePeak:333.00(1425558)
 BG Mode:Calc. from Peak



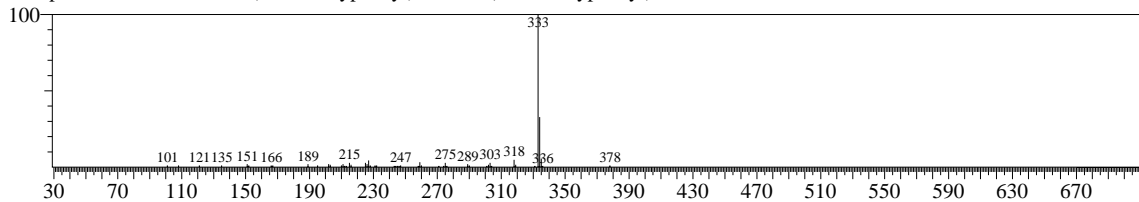
Hit#:1 Entry:322689 Library:WILEY7N2.LIB
 SI:83 Formula:C20H15NO4 CAS:0-0-0 MolWeight:333 RetIndex:0
 CompName:Demethylchelerythrine



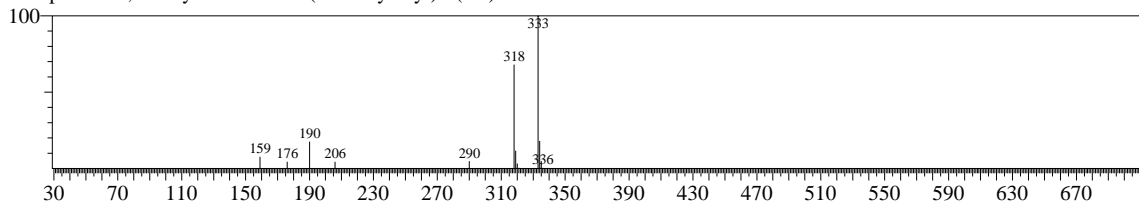
Hit#:2 Entry:322688 Library:WILEY7N2.LIB
 SI:78 Formula:C20H15NO4 CAS:6900-99-8 MolWeight:333 RetIndex:0
 CompName:Norchelerythrine \$\$ [1,3]Benzodioxolo[5,6-c]phenanthridine, 1,2-dimethoxy- (CAS) \$\$ Norchelerythrin \$\$ N-Norchele



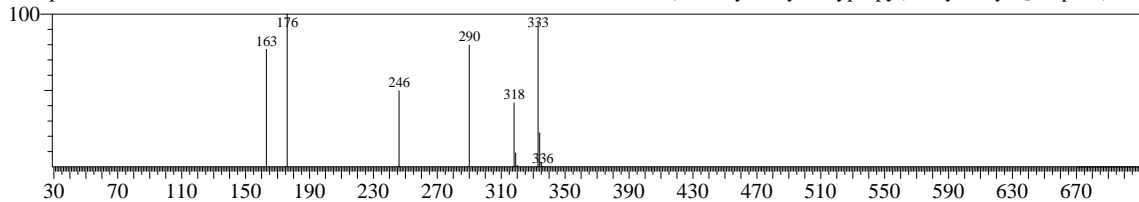
Hit#:3 Entry:364909 Library:WILEY7N2.LIB
 SI:67 Formula:C23H22O5 CAS:95431-48-4 MolWeight:378 RetIndex:0
 CompName:Acetic acid, tris(4-methoxyphenyl)- \$\$ Tris(4-methoxyphenyl)acetic acid #



Hit#:4 Entry:322210 Library:WILEY7N2.LIB
 SI:67 Formula:C11H16INOSi CAS:88761-39-1 MolWeight:333 RetIndex:0
 CompName:2,3-Dihydro-6-iodo-7-(trimethylsilyl)-5(1H)-indolizinone

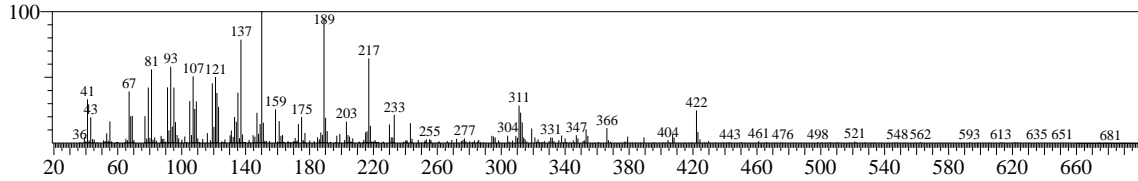


Hit#:5 Entry:322744 Library:WILEY7N2.LIB
 SI:66 Formula:C20H31NO3 CAS:72047-73-5 MolWeight:333 RetIndex:0
 CompName:DIHYDROXYMEGASTACHYNE \$\$ Fawcettidine, 5-deoxo-5-(1-formyl-2-hydroxypropyl)-6-hydroxy-, [5.alpha.(1R,2

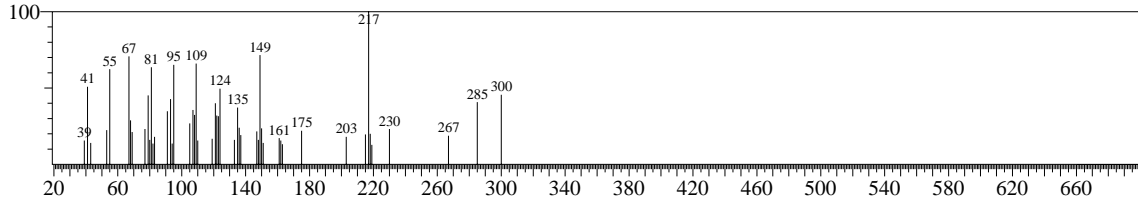


<< Target >>

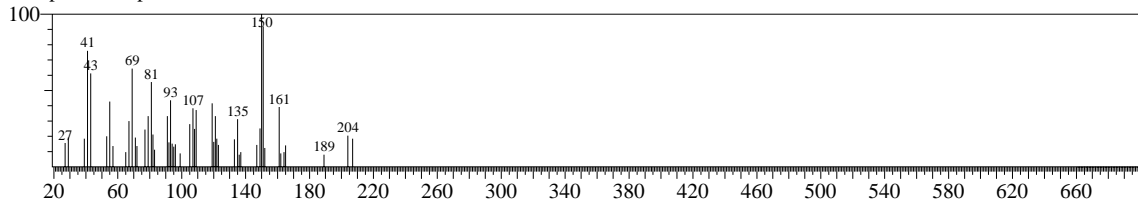
Line#9 R.Time:7.783(Scan#:258) MassPeaks:371
RawMode:Averaged 7.767-7.800(257-259) BasePeak:150.10(232680)
BG Mode:Calc. from Peak



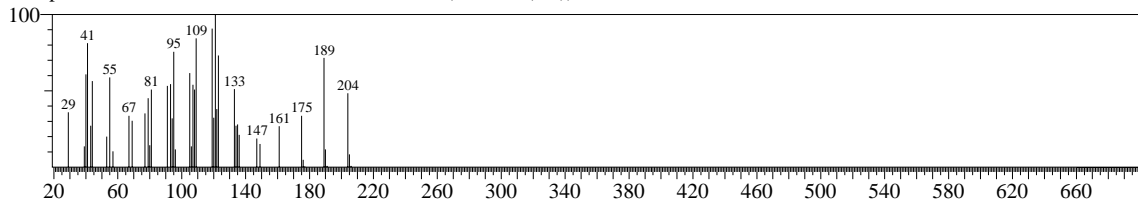
Hit#1 Entry:282401 Library:WILEY7N2.LIB
SI:69 Formula:C21H32O CAS:26152-90-9 MolWeight:300 RetIndex:0
CompName:Pregn-20-yn-17-ol, (5.beta.,17.alpha.)- \$\$ Pregn-20-yn-17-ol #



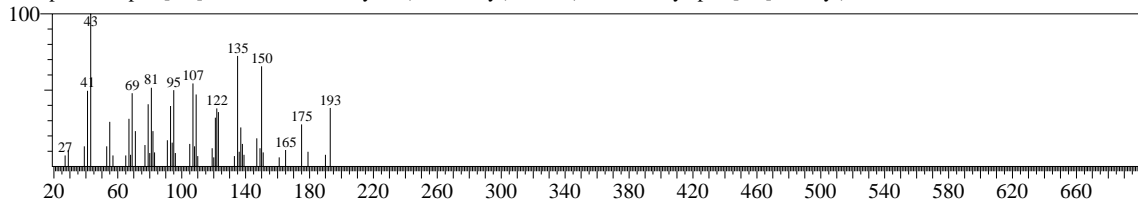
Hit#2 Entry:164137 Library:WILEY7N2.LIB
SI:68 Formula:C15H26O CAS:77-53-2 MolWeight:222 RetIndex:0
CompName:alpha-Cedrol



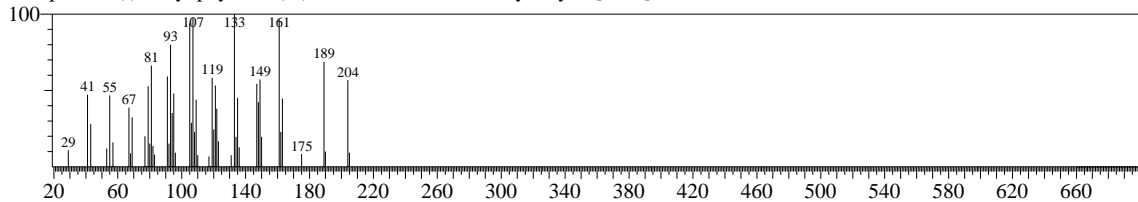
Hit#3 Entry:134055 Library:WILEY7N2.LIB
SI:68 Formula:C15H24 CAS:38609-30-2 MolWeight:204 RetIndex:0
CompName:2,2,3,7-TETRAMETHYLTRICYCLO(5.2.0.0.(1,6))UNDEC-3-ENE



Hit#4 Entry:141002 Library:WILEY7N2.LIB
SI:68 Formula:C14H24O CAS:77143-32-9 MolWeight:208 RetIndex:0
CompName:Spiro[2.5]octane, 5,5-dimethyl-4-(3-oxobutyl)- \$\$ 4-(5,5-Dimethylspiro[2.5]oct-4-yl)-2-butanone #

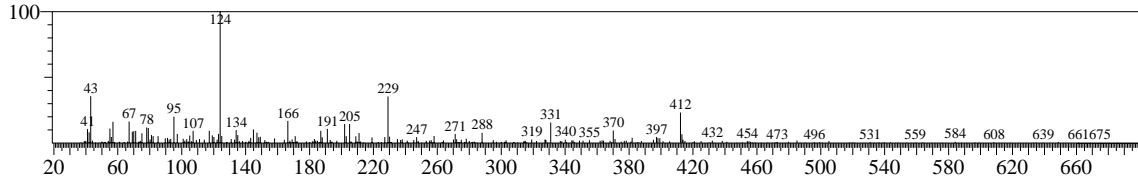


Hit#5 Entry:134262 Library:WILEY7N2.LIB
SI:68 Formula:C15H24 CAS:0-0-0 MolWeight:204 RetIndex:0
CompName:(-)-Caryophyllene-(II) \$\$ 2,6,10,10-Tetramethylbicyclo[7.2.0]undeca-1,6-diene #

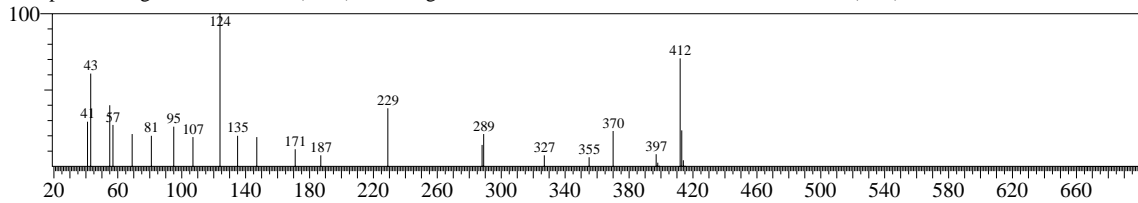


<< Target >>

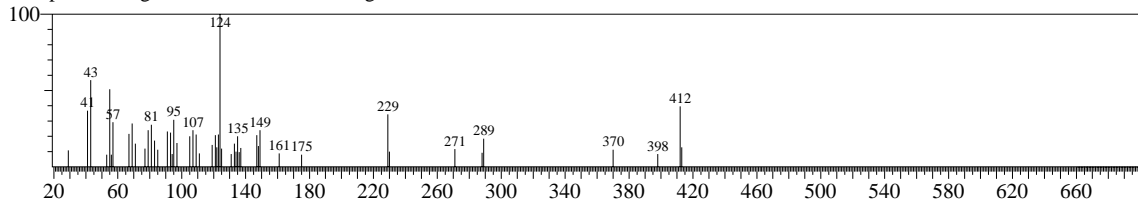
Line#:10 R.Time:7.917(Scan#:266) MassPeaks:317
RawMode:Averaged 7.900-7.933(265-267) BasePeak:124.10(161098)
BG Mode:Calc. from Peak



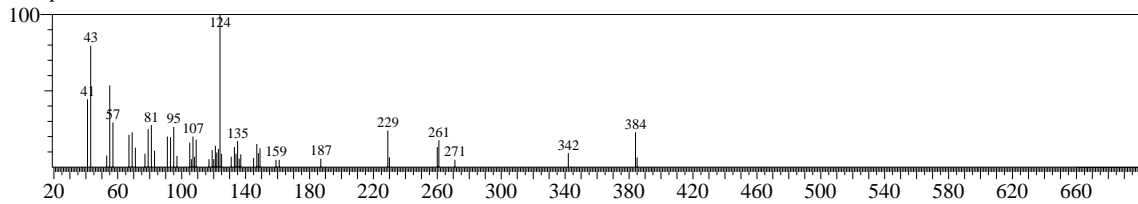
Hit#:1 Entry:386988 Library:WILEY7N2.LIB
SI:65 Formula:C₂₉H₄₈O CAS:1058-61-3 MolWeight:412 RetIndex:0
CompName:Stigmas-4-en-3-one (CAS) \$\$ 4-Stigmas-3-one \$\$.DELTA.4-Sitosterol-3-one \$\$ (24R)-4-STIGMASTEN-3-ONE \$



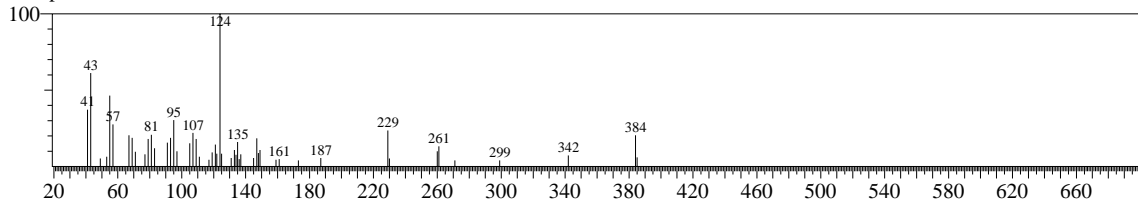
Hit#:2 Entry:386987 Library:WILEY7N2.LIB
SI:62 Formula:C₂₉H₄₈O CAS:1058-61-3 MolWeight:412 RetIndex:0
CompName:Stigmas-4-en-3-one \$\$ 4-Stigmas-3-one \$\$ Sitostenone \$\$.DELTA.4-Sitosterol-3-one



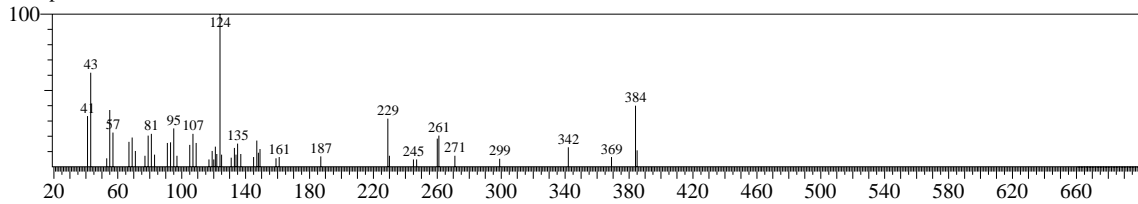
Hit#:3 Entry:369247 Library:WILEY7N2.LIB
SI:60 Formula:C₂₇H₄₄O CAS:601-57-0 MolWeight:384 RetIndex:0
CompName:Cholest-4-en-3-one



Hit#:4 Entry:369244 Library:WILEY7N2.LIB
SI:60 Formula:C₂₇H₄₄O CAS:601-57-0 MolWeight:384 RetIndex:0
CompName:Cholest-4-en-3-one

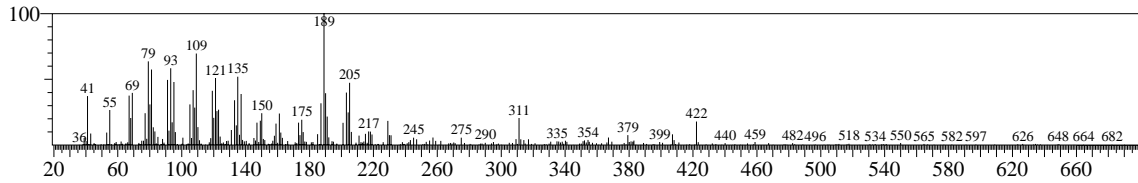


Hit#:5 Entry:369242 Library:WILEY7N2.LIB
SI:60 Formula:C₂₇H₄₄O CAS:601-57-0 MolWeight:384 RetIndex:0
CompName:Cholest-4-en-3-one

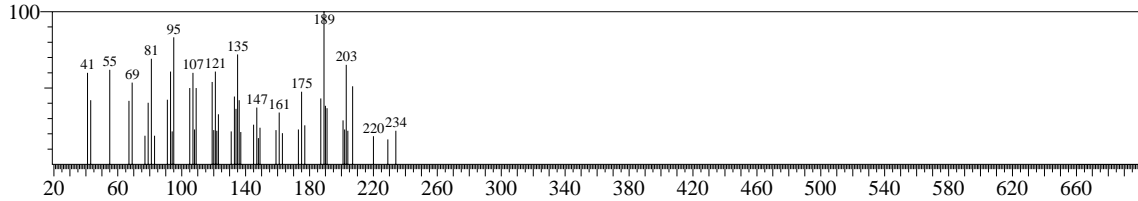


<< Target >>

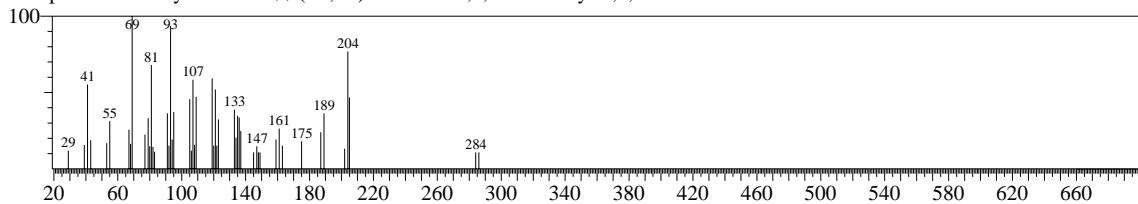
Line#:11 R.Time:8.483(Scan#:300) MassPeaks:373
RawMode:Averaged 8.467-8.500(299-301) BasePeak:189.05(154075)
BG Mode:Calc. from Peak



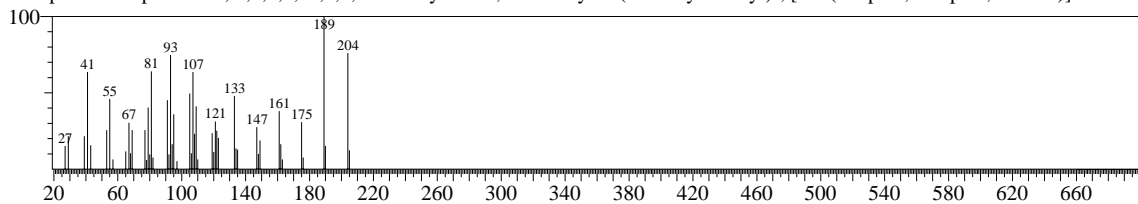
Hit#:1 Entry:401242 Library:WILEY7N2.LIB
SI:79 Formula:C30H50O2 CAS:473-98-3 MolWeight:442 RetIndex:0
CompName:Betulin



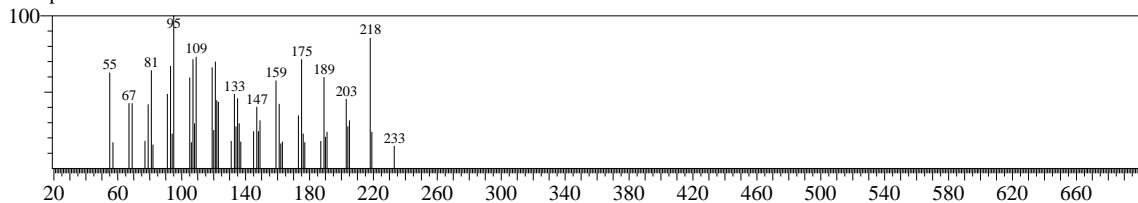
Hit#:2 Entry:259112 Library:WILEY7N2.LIB
SI:78 Formula:C15H25Br CAS:6874-67-5 MolWeight:284 RetIndex:0
CompName:Farnesyl bromide \$\$ (2E,6E)-1-Bromo-3,7,11-trimethyl-2,6,10-dodecatriene #



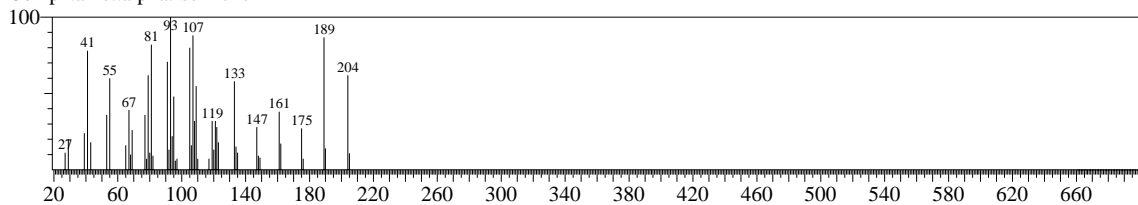
Hit#:3 Entry:133815 Library:WILEY7N2.LIB
SI:77 Formula:C15H24 CAS:473-13-2 MolWeight:204 RetIndex:0
CompName:Naphthalene, 1,2,3,4,4a,5,6,8a-octahydro-4a,8-dimethyl-2-(1-methylethenyl)-, [2R-(2.alpha.,4a.alpha.,8a.beta.)]-



Hit#:4 Entry:410741 Library:WILEY7N2.LIB
SI:76 Formula:C31H50O3 CAS:0-0-0 MolWeight:470 RetIndex:0
CompName:METHYL COMMATE B

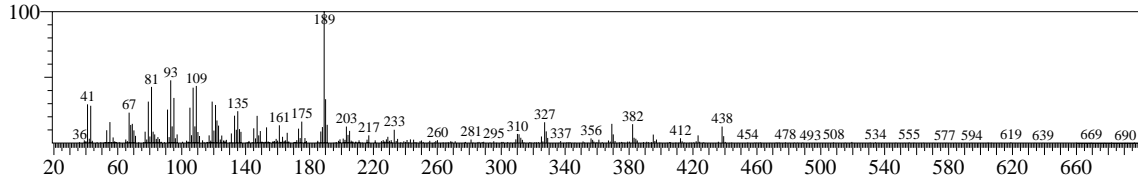


Hit#:5 Entry:134096 Library:WILEY7N2.LIB
SI:76 Formula:C15H24 CAS:473-13-2 MolWeight:204 RetIndex:0
CompName:.alpha.-selinene

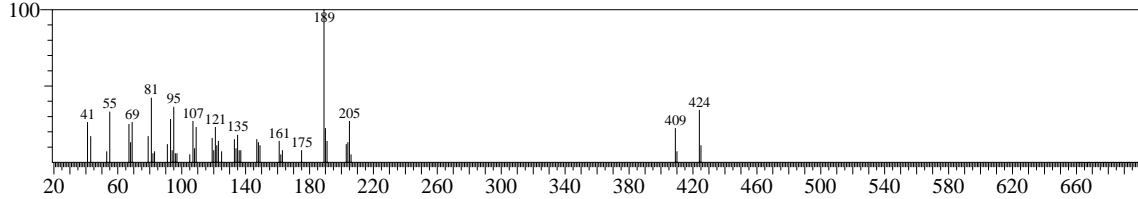


<< Target >>

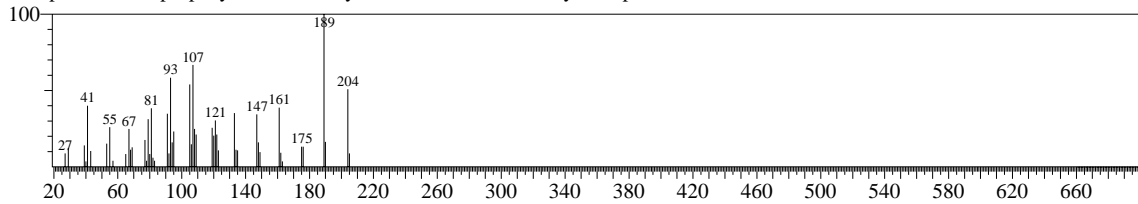
Line#:12 R.Time:9.200(Scan#:343) MassPeaks:396
RawMode:Averaged 9.183-9.217(342-344) BasePeak:189.10(338080)
BG Mode:Calc. from Peak



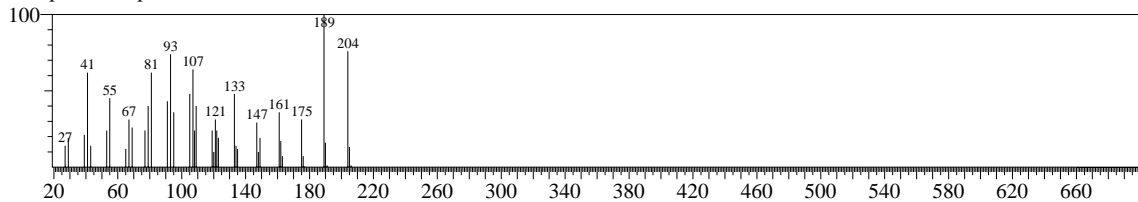
Hit#:1 Entry:393378 Library:WILEY7N2.LIB
SI:78 Formula:C30H48O CAS:25615-11-6 MolWeight:424 RetIndex:0
CompName:A'-Neogammacer-22(29)-en-3-one \$\$ Hop-22(29)-en-3-one \$\$ Hopenone b



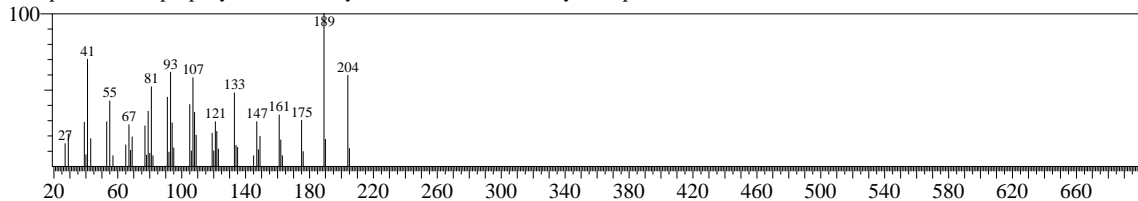
Hit#:2 Entry:134285 Library:WILEY7N2.LIB
SI:77 Formula:C15H24 CAS:0-0-0 MolWeight:204 RetIndex:0
CompName:2-Isopropenyl-4a,8-dimethyl-1,2,3,4,4a,5,6,8a-octahydronaphthalene



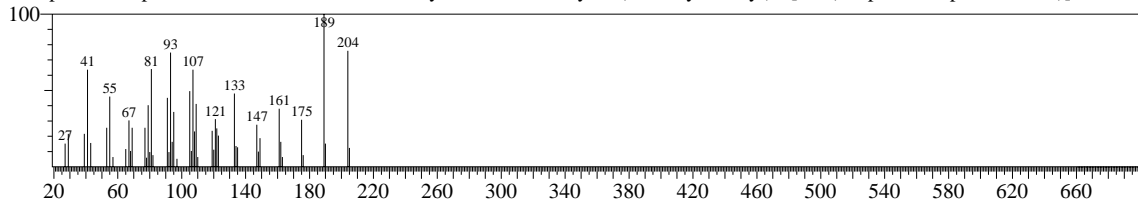
Hit#:3 Entry:134097 Library:WILEY7N2.LIB
SI:76 Formula:C15H24 CAS:473-13-2 MolWeight:204 RetIndex:0
CompName:.alpha.-selinene



Hit#:4 Entry:134286 Library:WILEY7N2.LIB
SI:75 Formula:C15H24 CAS:0-0-0 MolWeight:204 RetIndex:0
CompName:2-Isopropenyl-4a,8-dimethyl-1,2,3,4,4a,5,6,8a-octahydronaphthalene

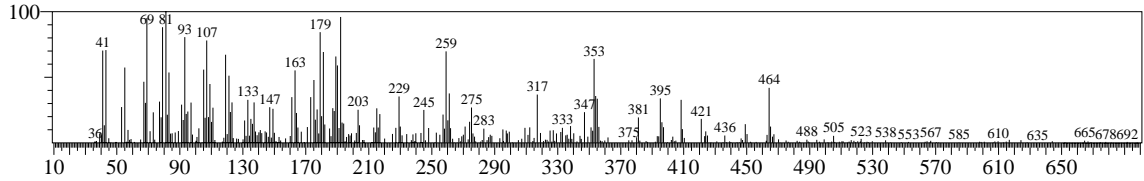


Hit#:5 Entry:133815 Library:WILEY7N2.LIB
SI:75 Formula:C15H24 CAS:473-13-2 MolWeight:204 RetIndex:0
CompName:Naphthalene, 1,2,3,4,4a,5,6,8a-octahydro-4a,8-dimethyl-2-(1-methylethenyl)-, [2R-(2.alpha.,4a.alpha.,8a.beta.)]-

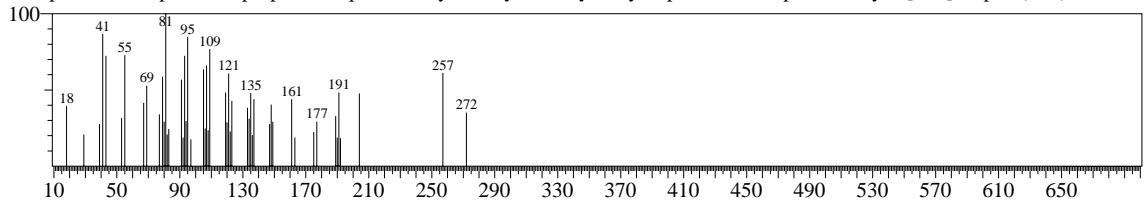


<< Target >>

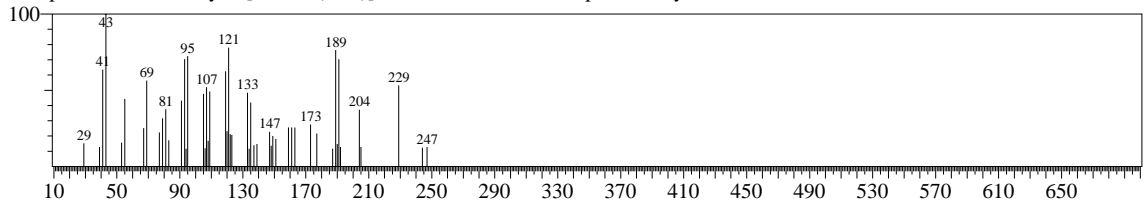
Line#:13 R.Time:9.317(Scan#:350) MassPeaks:390
 RawMode:Averaged 9.300-9.333(349-351) BasePeak:81.10(75753)
 BG Mode:Calc. from Peak



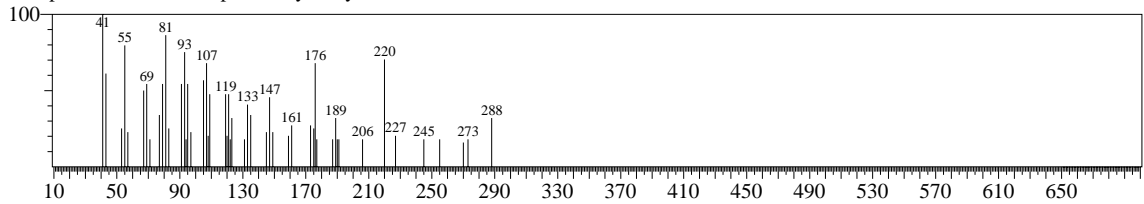
Hit#:1 Entry:292513 Library:WILEY7N2.LIB
 SI:62 Formula:C20H36O2 CAS:515-3-7 MolWeight:308 RetIndex:0
 CompName:1-Naphthalenepropanol, .alpha.-ethenyldecahydro-2-hydroxy-.alpha.,2,5,5,8a-pentamethyl-, [1R-[1.alpha.(R@),2.beta.,4



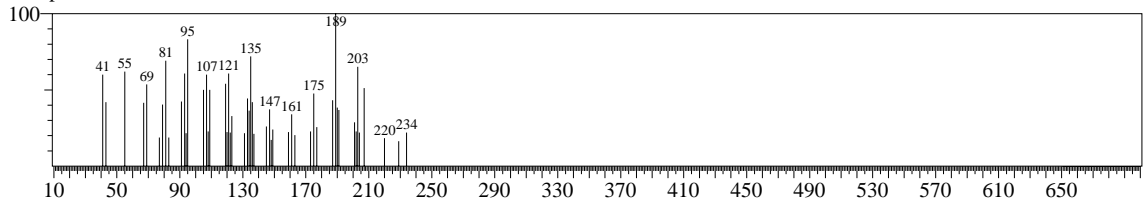
Hit#:2 Entry:227313 Library:WILEY7N2.LIB
 SI:62 Formula:C18H30O CAS:0-0-0 MolWeight:262 RetIndex:0
 CompName:14-Oxatricyclo[9..2.1.0(1,10)]tetradecane, 2,6,6,10,11-pentamethyl-



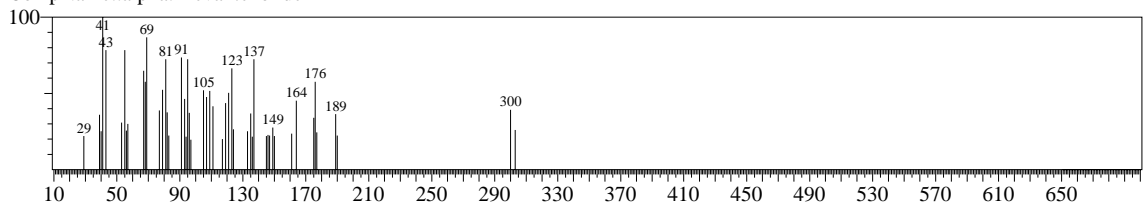
Hit#:3 Entry:290017 Library:WILEY7N2.LIB
 SI:61 Formula:C20H34O2 CAS:0-0-0 MolWeight:306 RetIndex:0
 CompName:2.beta.,11.alpha.-Dihydroxyverrucosane



Hit#:4 Entry:401242 Library:WILEY7N2.LIB
 SI:61 Formula:C30H50O2 CAS:473-98-3 MolWeight:442 RetIndex:0
 CompName:Betulin



Hit#:5 Entry:305328 Library:WILEY7N2.LIB
 SI:61 Formula:C20H30O3 CAS:30987-48-5 MolWeight:318 RetIndex:0
 CompName:.alpha.-Levantenolide



Method

[Comment]

===== Analytical Line 1 =====

[AOC-20i+s]

of Rinses with Presolvent :3
 # of Rinses with Solvent(post) :5
 # of Rinses with Sample :3
 Plunger Speed(Suction) :Middle
 Viscosity Comp. Time :0.0 sec
 Plunger Speed(Injection) :High
 Syringe Insertion Speed :High
 Injection Mode :Normal
 Pumping Times :5
 Inj. Port Dwell Time :0.0 sec
 Terminal Air Gap :No
 Plunger Washing Speed :High
 Washing Volume :8uL
 Syringe Suction Position :0.0 mm
 Syringe Injection Position :0.0 mm
 Solvent Selection :All A,B,C

[GC-2010]

Column Oven Temp. :275.0 °C
 Injection Temp. :310.00 °C
 Injection Mode :Split
 Flow Control Mode :Linear Velocity
 Pressure :139.5 kPa
 Total Flow :6.0 mL/min
 Column Flow :1.00 mL/min
 Linear Velocity :39.6 cm/sec
 Purge Flow :1.0 mL/min
 Split Ratio :4.0
 High Pressure Injection :OFF
 Carrier Gas Saver :OFF
 Splitter Hold :OFF
 Oven Temp. Program

Rate	Temperature(°C)	Hold Time(min)
-	275.0	2.00
8.0	320.0	6.00

< Ready Check Heat Unit >

Column Oven : Yes
 SPL1 : Yes
 MS : Yes

< Ready Check Detector(FTD) >

< Ready Check Baseline Drift >

< Ready Check Injection Flow >

SPL1 Carrier : Yes
 SPL1 Purge : Yes

< Ready Check APC Flow >

< Ready Check Detector APC Flow >

External Wait :Yes
 Equilibrium Time :0.1 min

[GC Program]

[GCMS-QP2010]

IonSourceTemp :260.00 °C
 Interface Temp. :280.00 °C
 Solvent Cut Time :2.50 min
 Ionization Mode :SEI
 Detector Gain Mode :Relative
 Detector Gain :1.00 kV
 Threshold :5

[MS Table]

Group : 1
 Start Time :3.50min
 End Time :13.00min
 ACQ Mode :Scan
 Interval :1.00sec
 Scan Speed :714
 Start m/z :35.00
 End m/z :700.00

Sample Inlet Unit :GC

[MS Program]

Use MS Program :OFF