



UNIVERSIDAD TECNOLÓGICA DE PEREIRA

GRUPO POLIFENÓLES UTP

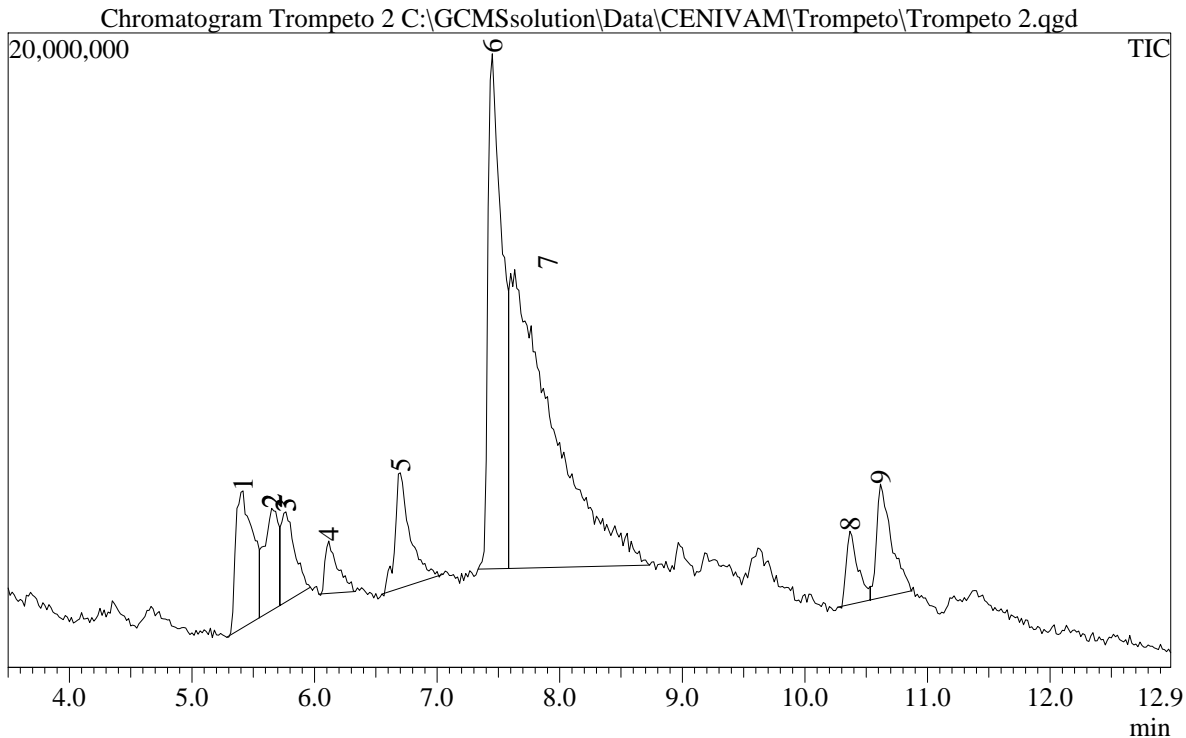


LABORATORIO DE CALIDAD DE PRODUCTOS NATURALES

CERTICADO DE CALIDAD/QUALITY CERTIFICATE

Reporte/Report : Trompeto 2
 Fecha/Date : 3/10/2007 4:12:49 PM

Identificación de la muestra/Sample ID : Trompeto 2
 Vol. Inyección/Injection Vol.: 2.000
 Archivo/Data File : C:\GCMSsolution\Data\CENIVAM\Trompeto\Trompeto 2.qgd
 Método/Method File : C:\GCMSsolution\Data\CENIVAM\linas\Justi\ESTEROIDESLINAS.qgm
 Tuning File : C:\GCMSsolution\System\Tune1\CPN-SEI10260CLOSE20070222.qgt
 Descripción muestra/Sample Descr. : Trompeto EtOAc



Quantitative Result Table

ID#	R.Time	Name	m/z	Area	Conc.	ilarity
1	5.439	3a,4,5,5b,7a,12a,12b,13,14,14a,14b-dodecahydro-13-methyl[1,3]l	333	14681048	17.8	94
2	5.659	23 S-METHYLCHOLESTEROL	349	1238195	1.5	37
3	5.767	TRANS-STIGMASTA-5,22-DIEN-3.BETA.-OL	55	406093	0.5	66
4	6.151	.gamma.-Sitosterol	43	954141	1.2	82
5	6.716	4-[2-(Naphthylmethyl)]-2-methylphenanthrene	332	11358082	13.8	91
6	7.497	[1,3]Benzodioxolo[5,6-c]-1,3-dioxolo[4,5-i]phenanthridine	317	41361845	50.2	89
7	7.683	Demethylchelerythrine	333	8433398	10.2	39
8	10.402	Naphthalene, 1,2,3,4,4a,5,6,8a-octahydro-4a,8-dimethyl-2-(1-met	189	1187806	1.4	79
9	10.650	2-[4-methyl-6-(2,6,6-trimethylcyclohex-1-enyl)hexa-1,3,5-trienyl	150	2732705	3.3	79



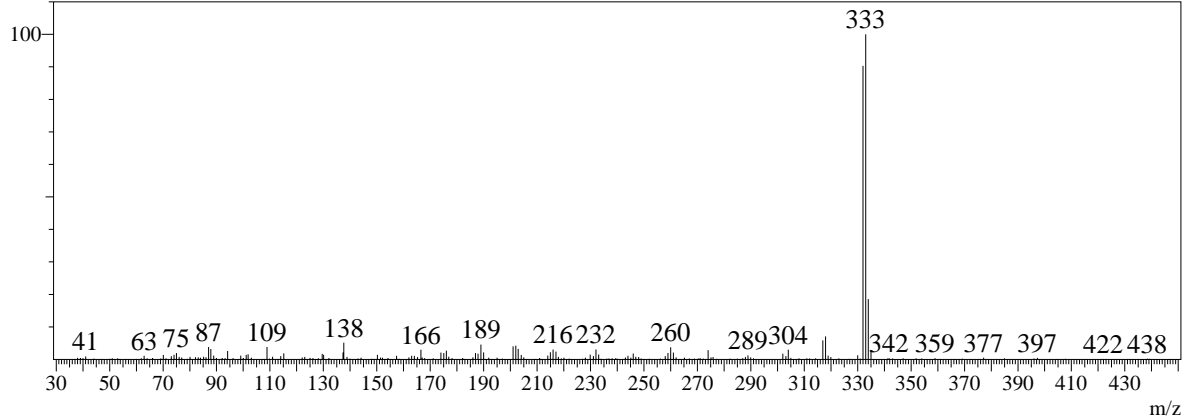
UNIVERSIDAD TECNOLÓGICA DE PEREIRA
GRUPO POLIFENÓLES UTP



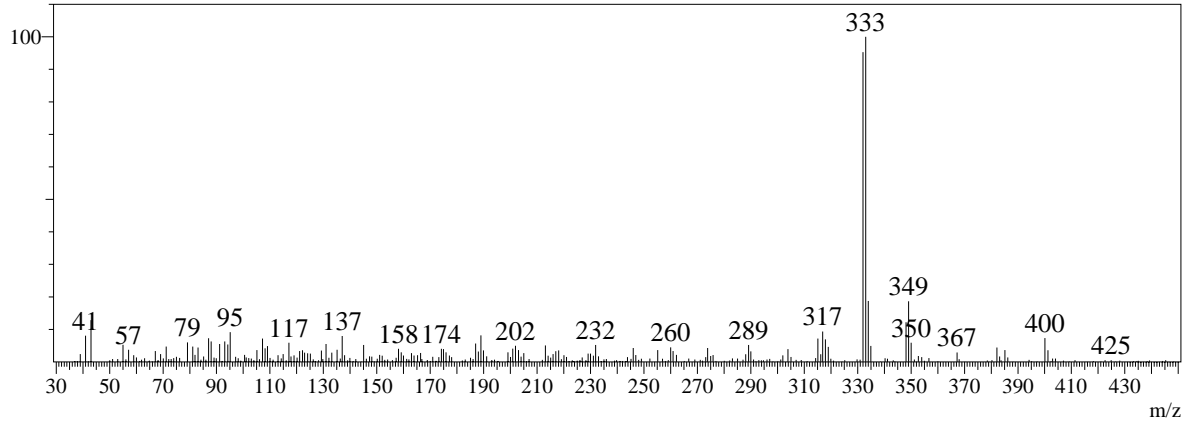
LABORATORIO DE CALIDAD DE PRODUCTOS NATURALES

Spectrum

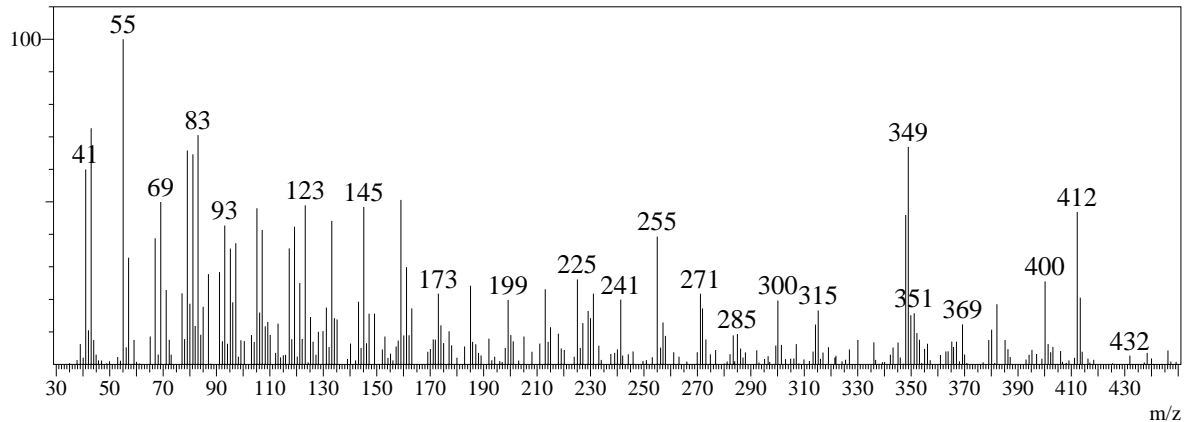
ID#:1 R.Time:5.4(Scan#:117)
 MassPeaks:369
 RawMode:Averaged 5.4-5.5(116-118)
 BG Mode:Calc. from Peak



ID#:2 R.Time:5.7(Scan#:131)
 MassPeaks:399
 RawMode:Averaged 5.7-5.7(130-132)
 BG Mode:Calc. from Peak



ID#:3 R.Time:5.8(Scan#:137)
 MassPeaks:366
 RawMode:Averaged 5.8-5.8(136-138)
 BG Mode:Calc. from Peak





UNIVERSIDAD TECNOLÓGICA DE PEREIRA

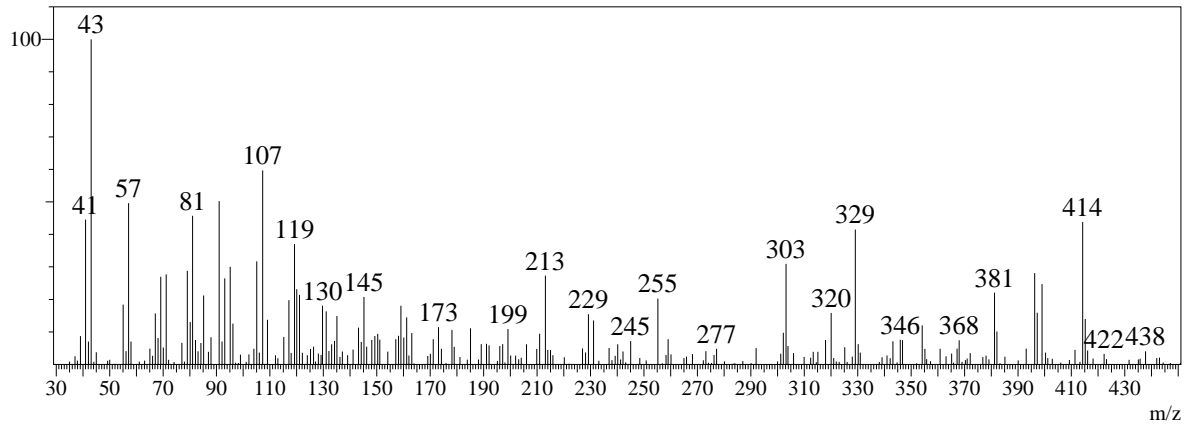
GRUPO POLIFENÓLES UTP



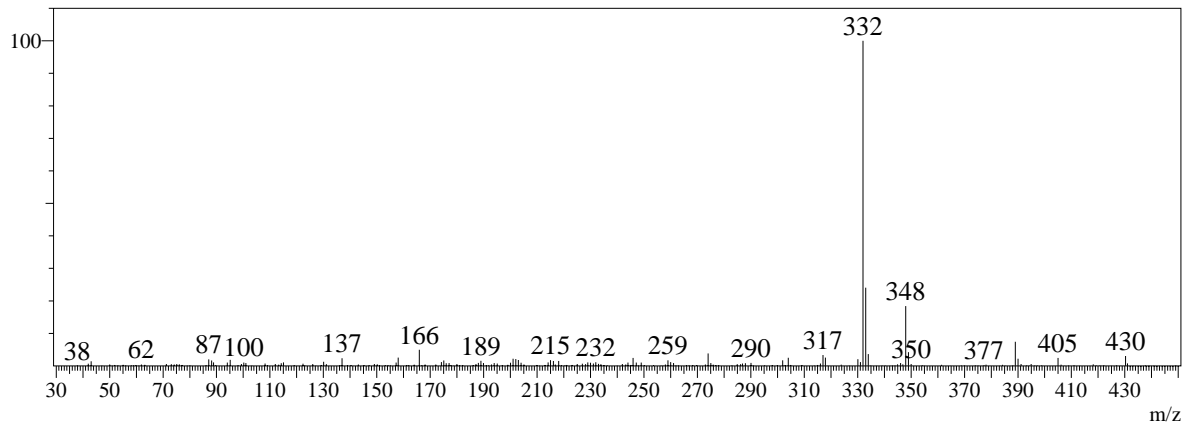
LABORATORIO DE CALIDAD DE PRODUCTOS NATURALES

Spectrum

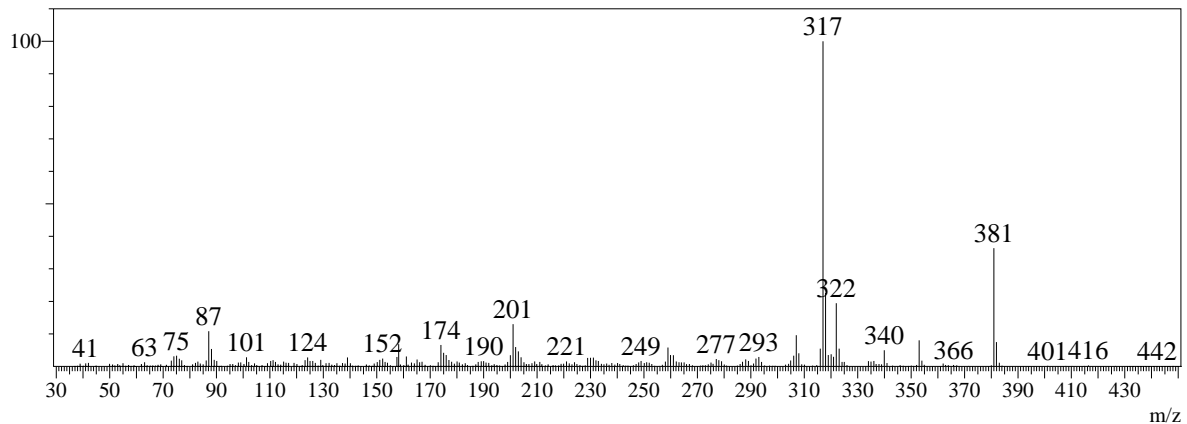
ID#:4 R.Time:6.2(Scan#:160)
 MassPeaks:346
 RawMode:Averaged 6.1-6.2(159-161)
 BG Mode:Calc. from Peak



ID#:5 R.Time:6.7(Scan#:194)
 MassPeaks:365
 RawMode:Averaged 6.7-6.7(193-195)
 BG Mode:Calc. from Peak



ID#:6 R.Time:7.5(Scan#:241)
 MassPeaks:483
 RawMode:Averaged 7.5-7.5(240-242)
 BG Mode:Calc. from Peak





UNIVERSIDAD TECNOLÓGICA DE PEREIRA

GRUPO POLIFENÓLES UTP

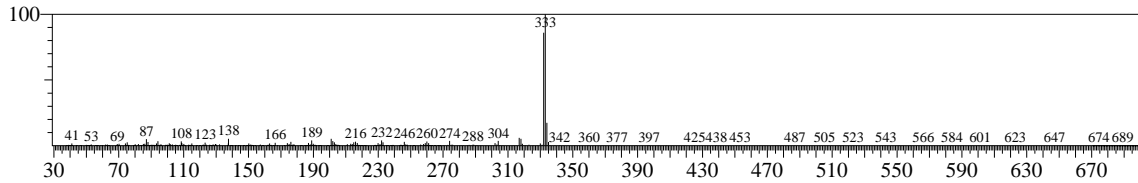


LABORATORIO DE CALIDAD DE PRODUCTOS NATURALES

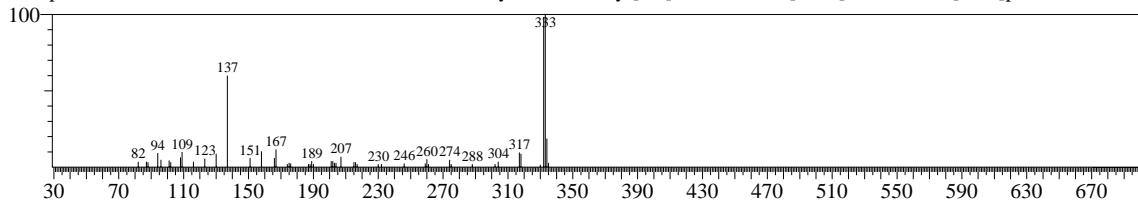
Library

<< Target >>

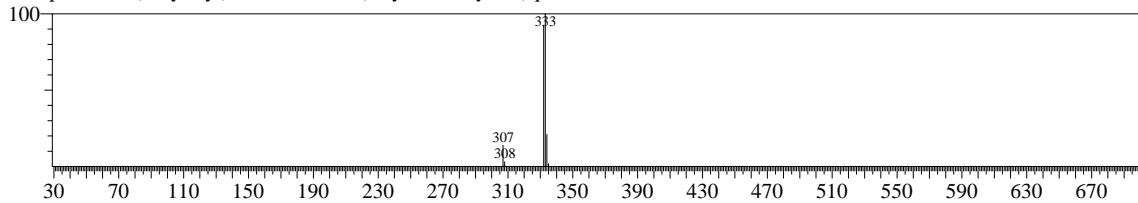
Line#:1 R.Time:5.417(Scan#:116) MassPeaks:369
RawMode:Averaged 5.400-5.433(115-117) BasePeak:333.00(696649)
BG Mode:Calc. from Peak



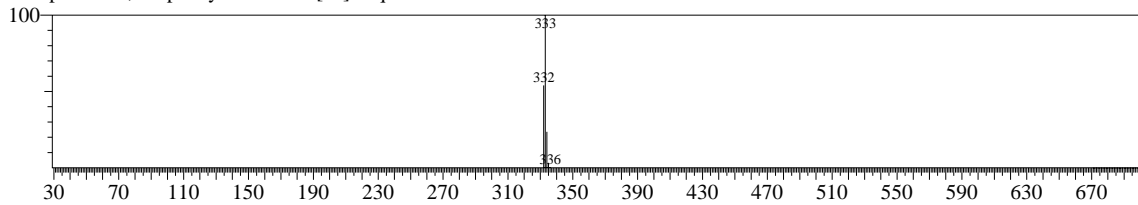
Hit#:1 Entry:324842 Library:WILEY7N2.LIB
SI:81 Formula:C₂₀H₁₇NO₄ CAS:0-0-0 MolWeight:335 RetIndex:0
CompName:3a,4,5,5b,7a,12a,12b,13,14,14a,14b-dodecahydro-13-methyl[1,3]benzodioxolo[5,6-c]-1,3-dioxolo[4,5-i]phenanthridine



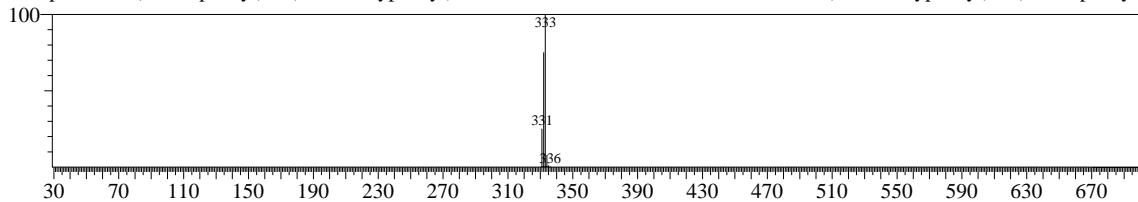
Hit#:2 Entry:322585 Library:WILEY7N2.LIB
SI:74 Formula:C₁₉H₇N₇ CAS:0-0-0 MolWeight:333 RetIndex:0
CompName:2-(2-Pyridyl)-5H,8H-5,8-bis(dicyanomethylene)quinoxaline



Hit#:3 Entry:325041 Library:WILEY7N2.LIB
SI:72 Formula:C₂₄H₁₇NO CAS:120742-88-3 MolWeight:335 RetIndex:0
CompName:1,3-diphenyl-6H-benzo[de]isoquinolin-6-one

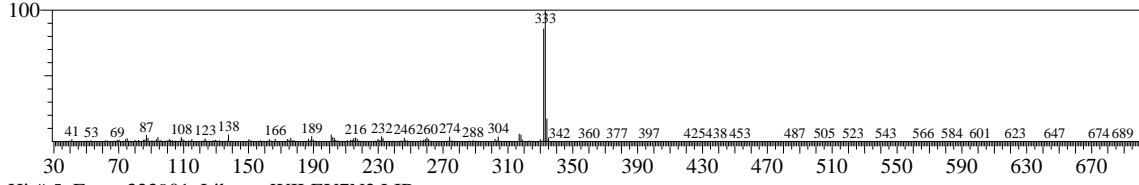


Hit#:4 Entry:320863 Library:WILEY7N2.LIB
SI:71 Formula:C₁₅H₁₂N₂O₃S₂ CAS:131085-89-7 MolWeight:332 RetIndex:0
CompName:3-(4-nitrophenyl)-5-(4-methoxyphenyl)-5H-1,4,2-dithiazole 1,4,2-Dithiazole, 5-(4-methoxyphenyl)-3-(4-nitrophenyl)

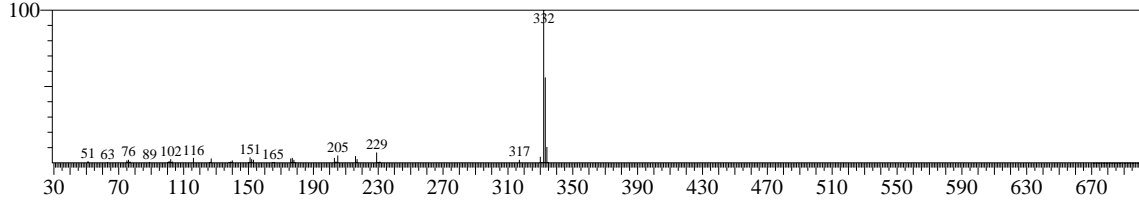


<< Target >>

Line#:1 R.Time:5.417(Scan#:116) MassPeaks:369
 RawMode:Averaged 5.400-5.433(115-117) BasePeak:333.00(696649)
 BG Mode:Calc. from Peak

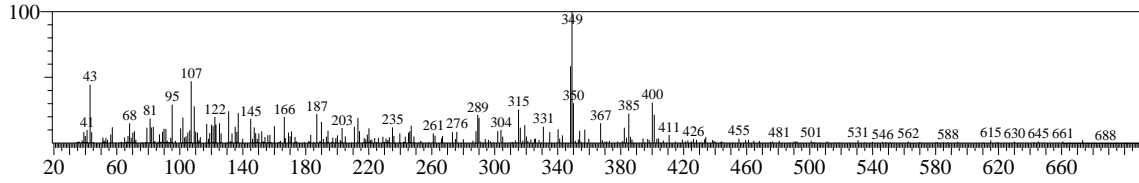


Hit#:5 Entry:322901 Library:WILEY7N2.LIB
 SI:69 Formula:C23H15N3 CAS:61973-88-4 MolWeight:333 RetIndex:0
 CompName:2,6-Bis[4-cyanostyryl]pyridine \$\$ 4-((Z)-2-(6-[(E)-2-(4-Cyanophenyl)ethenyl]-2-pyridinyl)ethenyl)benzonitrile #

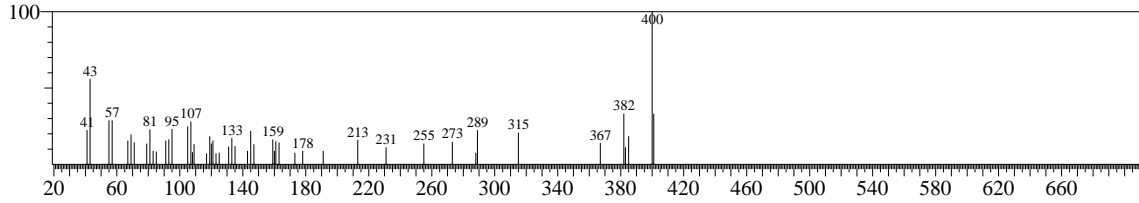


<< Target >>

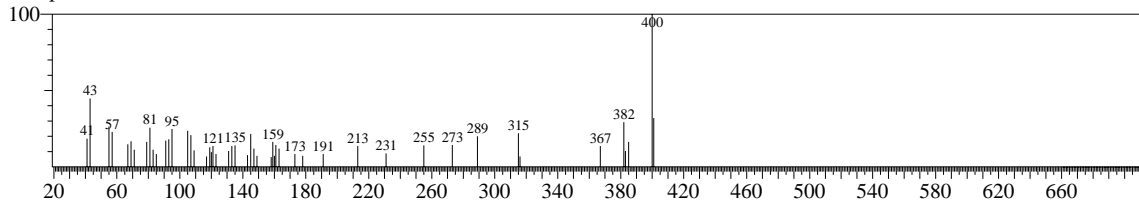
Line#:2 R.Time:5.650(Scan#:130) MassPeaks:334
 RawMode:Averaged 5.633-5.667(129-131) BasePeak:349.05(51432)
 BG Mode:Calc. from Peak



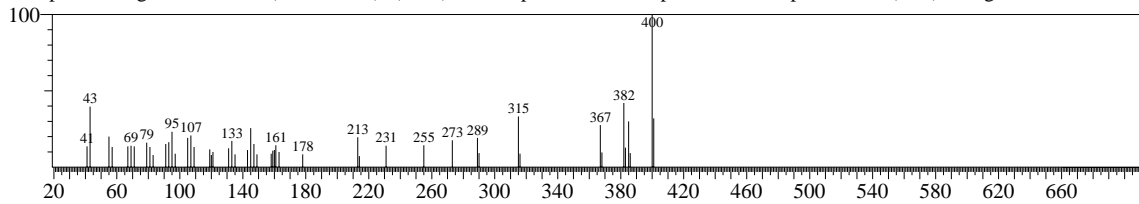
Hit#:1 Entry:380317 Library:WILEY7N2.LIB
 SI:52 Formula:C28H48O CAS:0-0-0 MolWeight:400 RetIndex:0
 CompName:23 S-METHYLCHOLESTEROL



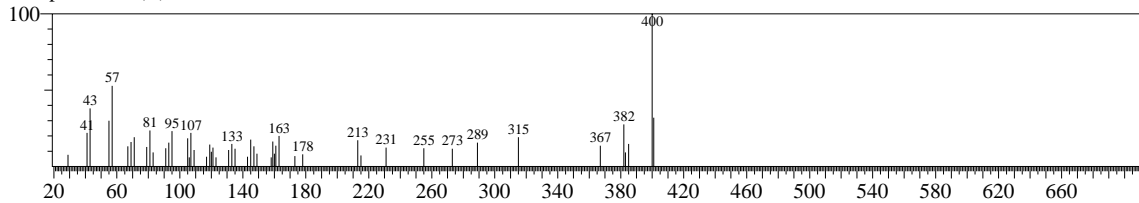
Hit#:2 Entry:380316 Library:WILEY7N2.LIB
 SI:52 Formula:C28H48O CAS:0-0-0 MolWeight:400 RetIndex:0
 CompName:23-R-METHYLCHOLESTEROL



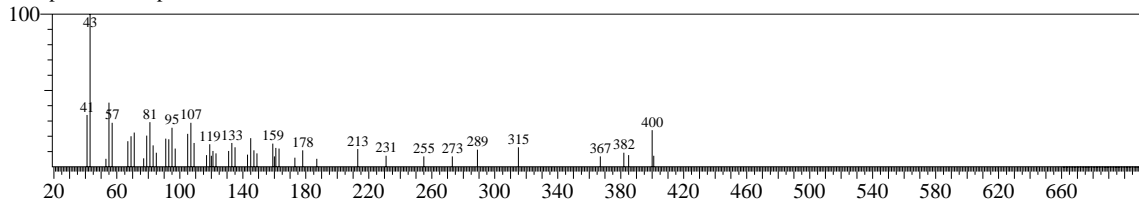
Hit#:3 Entry:380260 Library:WILEY7N2.LIB
 SI:51 Formula:C28H48O CAS:474-62-4 MolWeight:400 RetIndex:0
 CompName:Ergost-5-en-3-ol, (3.beta.,24R)- (CAS) \$\$ Campesterol \$\$ Campesterin \$\$ (24R)-5-Ergosten-3.beta.-ol



Hit#:4 Entry:380318 Library:WILEY7N2.LIB
 SI:50 Formula:C28H48O CAS:0-0-0 MolWeight:400 RetIndex:0
 CompName:22(R)-METHYLCHOLESTEROL

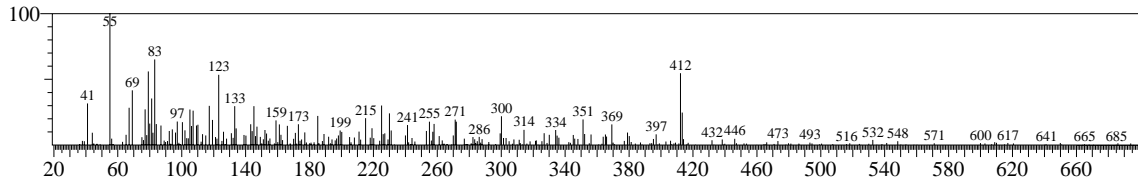


Hit#:5 Entry:380259 Library:WILEY7N2.LIB
 SI:49 Formula:C28H48O CAS:474-62-4 MolWeight:400 RetIndex:0
 CompName:Campesterol

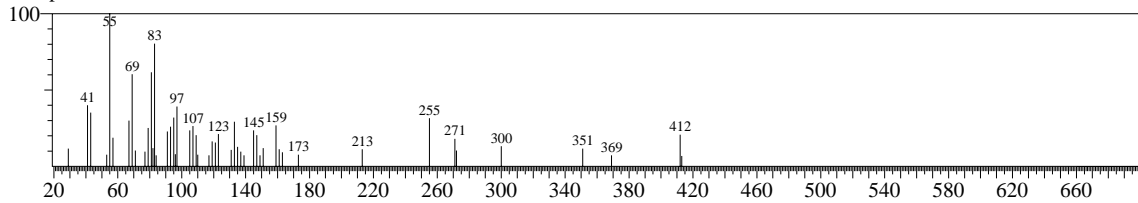


<< Target >>

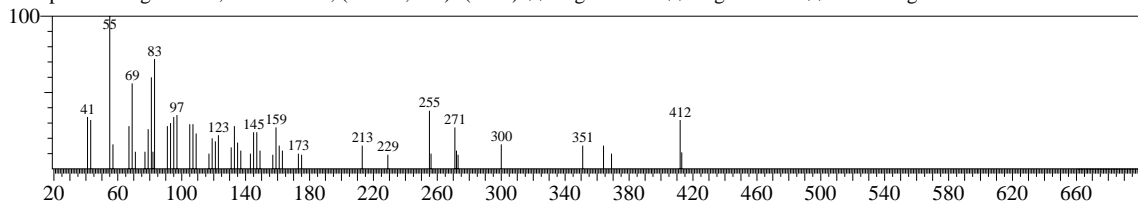
Line#3 R.Time:5.767(Scan#:137) MassPeaks:336
RawMode:Averaged 5.750-5.783(136-138) BasePeak:55.05(54426)
BG Mode:Calc. from Peak



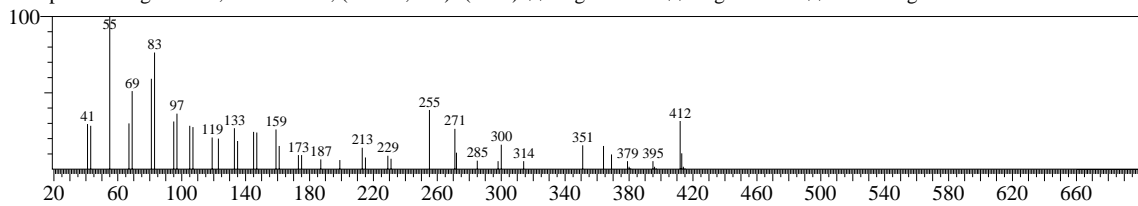
Hit#:1 Entry:386972 Library:WILEY7N2.LIB
SI:68 Formula:C29H48O CAS:83-48-7 MolWeight:412 RetIndex:0
CompName:TRANS-STIGMASTA-5,22-DIEN-3.BETA.-OL



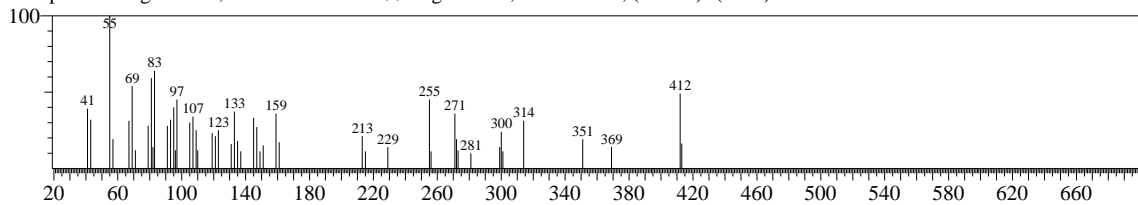
Hit#:2 Entry:386975 Library:WILEY7N2.LIB
SI:67 Formula:C29H48O CAS:83-48-7 MolWeight:412 RetIndex:0
CompName:Stigmasta-5,22-dien-3-ol, (3.beta.,22E)- (CAS) \$\$ Stigmasterol \$\$ Stigmasterin \$\$.beta.-Stigmasterol



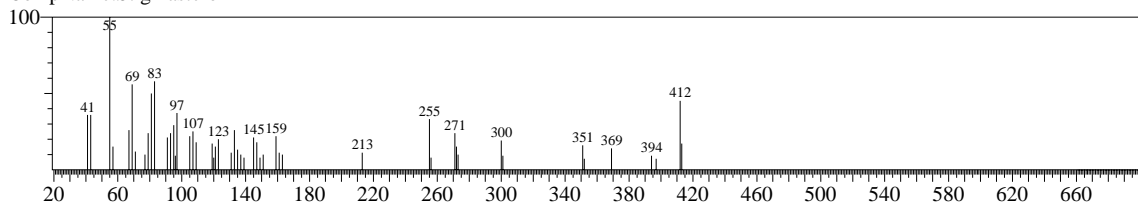
Hit#:3 Entry:386980 Library:WILEY7N2.LIB
SI:67 Formula:C29H48O CAS:83-48-7 MolWeight:412 RetIndex:0
CompName:Stigmasta-5,22-dien-3-ol, (3.beta.,22E)- (CAS) \$\$ Stigmasterol \$\$ Stigmasterin \$\$.beta.-Stigmasterol



Hit#:4 Entry:387004 Library:WILEY7N2.LIB
SI:66 Formula:C29H48O CAS:38485-29-9 MolWeight:412 RetIndex:0
CompName:Stigmasta-5,23-dien-3.beta.-ol \$\$ Stigmasta-5,23-dien-3-ol, (3.beta.)- (CAS)

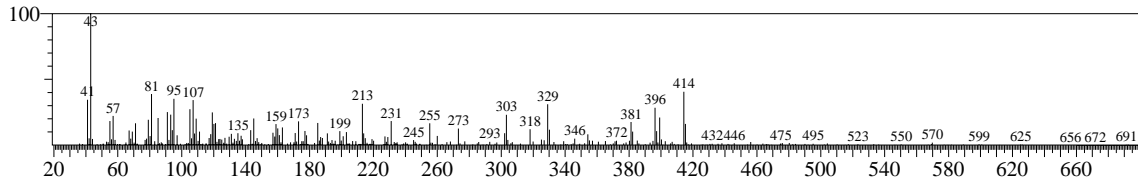


Hit#:5 Entry:386978 Library:WILEY7N2.LIB
SI:66 Formula:C29H48O CAS:83-48-7 MolWeight:412 RetIndex:0
CompName:Stigmasterol

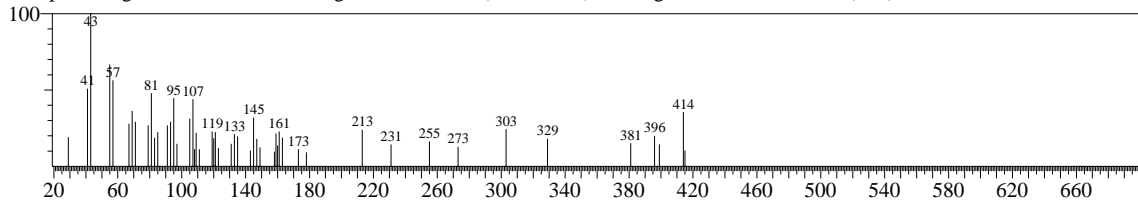


<< Target >>

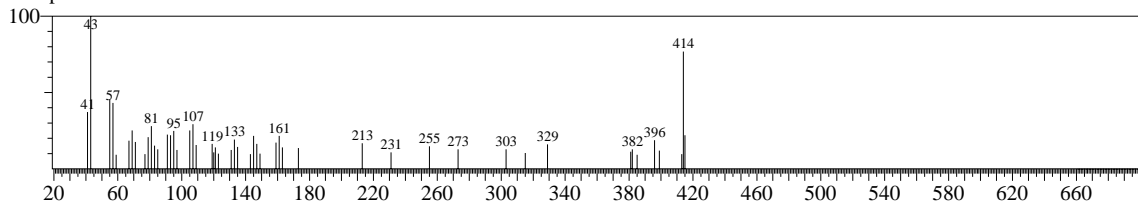
Line#:4 R.Time:6.117(Scan#:158) MassPeaks:359
RawMode:Averaged 6.100-6.133(157-159) BasePeak:43.05(102623)
BG Mode:Calc. from Peak



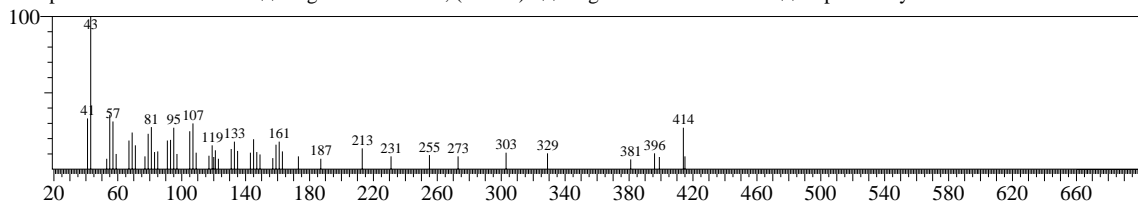
Hit#:1 Entry:388341 Library:WILEY7N2.LIB
SI:80 Formula:C29H50O CAS:83-47-6 MolWeight:414 RetIndex:0
CompName:.gamma.-Sitosterol \$\$ Stigmast-5-en-3-ol, (3.beta.,.24S)- \$\$ Stigmast-5-en-3.beta.-ol, (24S)- \$\$ Clionasterol



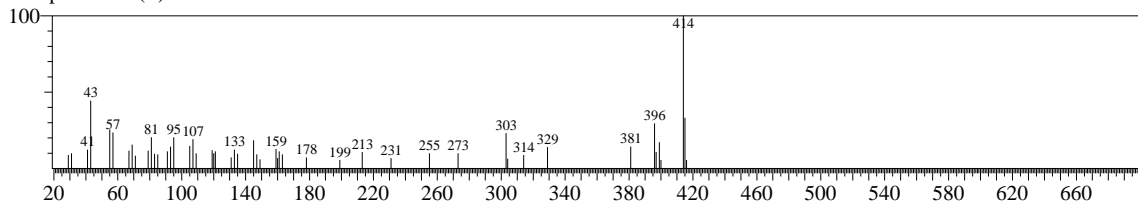
Hit#:2 Entry:388334 Library:WILEY7N2.LIB
SI:78 Formula:C29H50O CAS:83-46-5 MolWeight:414 RetIndex:0
CompName:.beta.-Sitosterol



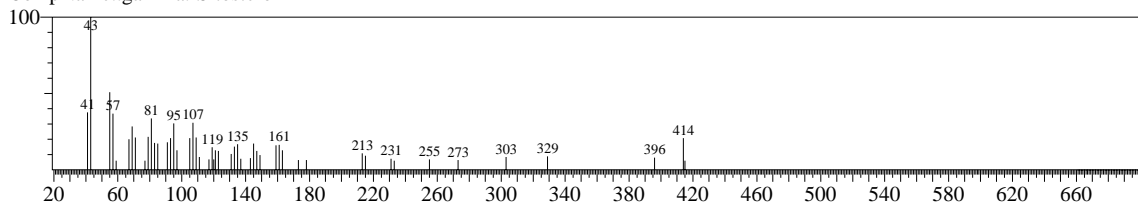
Hit#:3 Entry:388333 Library:WILEY7N2.LIB
SI:77 Formula:C29H50O CAS:83-46-5 MolWeight:414 RetIndex:0
CompName:.beta.-Sitosterol \$\$ Stigmast-5-en-3-ol, (3.beta.)- \$\$ Stigmast-5-en-3.beta.-ol \$\$.alpha.-Dihydrofucosterol



Hit#:4 Entry:388383 Library:WILEY7N2.LIB
SI:75 Formula:C29H50O CAS:0-0-0 MolWeight:414 RetIndex:0
CompName:24(Z)-METHYL-25-HOMOCHOLESTEROL

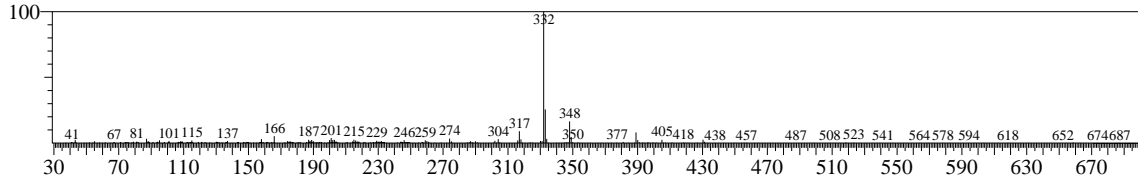


Hit#:5 Entry:388342 Library:WILEY7N2.LIB
SI:74 Formula:C29H50O CAS:83-47-6 MolWeight:414 RetIndex:0
CompName:.gamma.-Sitosterol

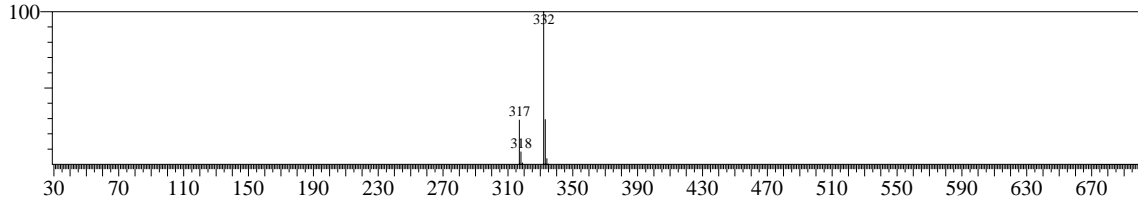


<< Target >>

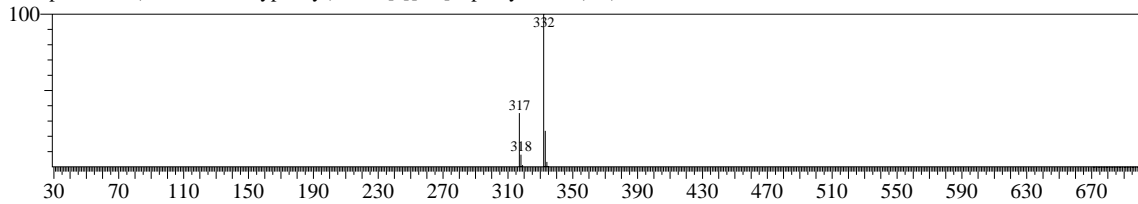
Line# 5 R.Time:6.700(Scan#:193) MassPeaks:387
 RawMode:Averaged 6.683-6.717(192-194) BasePeak:332.00(1011927)
 BG Mode:Calc. from Peak



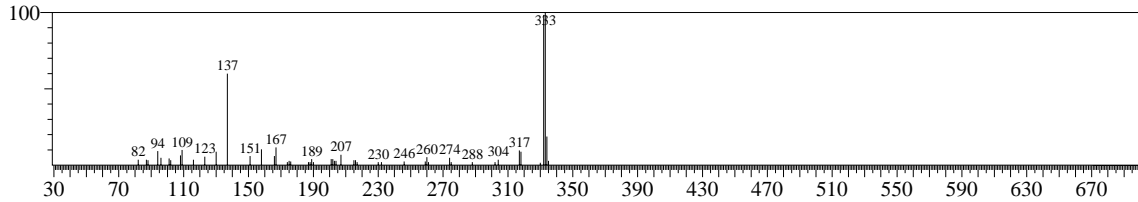
Hit# 1 Entry:322168 Library:WILEY7N2.LIB
 SI:69 Formula:C26H20 CAS:0-0-0 MolWeight:332 RetIndex:0
 CompName:4-[2-(Naphthylmethyl)]-2-methylphenanthrene



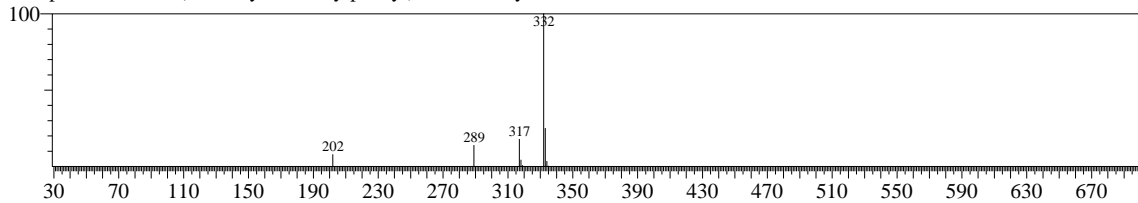
Hit# 2 Entry:321558 Library:WILEY7N2.LIB
 SI:69 Formula:C20H16N2O3 CAS:81755-6-8 MolWeight:332 RetIndex:0
 CompName:5-(3,4-Dimethoxyphenyl)benzo[c][2,7]naphthyridin-4(3H)-one



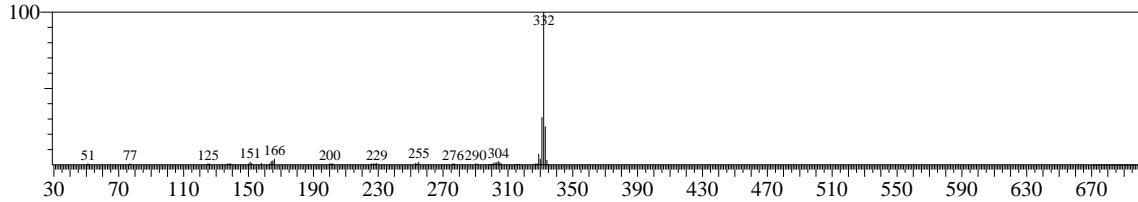
Hit# 3 Entry:324842 Library:WILEY7N2.LIB
 SI:69 Formula:C20H17NO4 CAS:0-0-0 MolWeight:335 RetIndex:0
 CompName:3a,4,5,5b,7a,12a,12b,13,14,14a,14b-dodecahydro-13-methyl[1,3]benzodioxolo[5,6-c]-1,3-dioxolo[4,5-i]phenanthridine



Hit# 4 Entry:322010 Library:WILEY7N2.LIB
 SI:68 Formula:C22H20O3 CAS:0-0-0 MolWeight:332 RetIndex:0
 CompName:3,4-Bis(3-Formyl-2-methylphenyl)-2,5-dimethylfuran

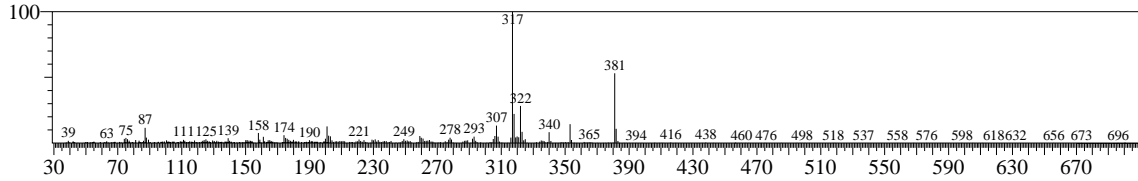


Hit# 5 Entry:322133 Library:WILEY7N2.LIB
 SI:68 Formula:C24H16N2 CAS:1662-1-7 MolWeight:332 RetIndex:0
 CompName:1,10-Phenanthroline, 4,7-diphenyl-



<< Target >>

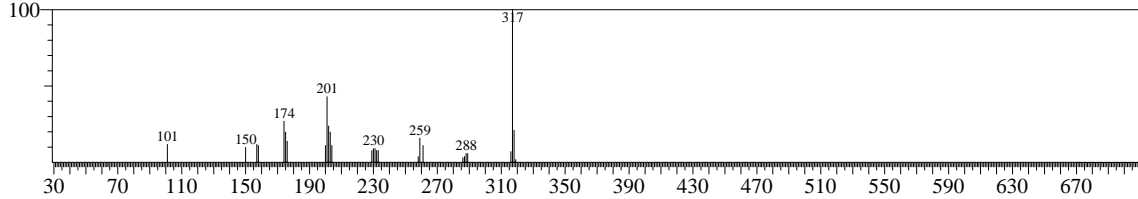
Line# 6 R.Time:7.450(Scan#:238) MassPeaks:464
 RawMode:Averaged 7.433-7.467(237-239) BasePeak:317.00(1590992)
 BG Mode:Calc. from Peak



Hit#1 Entry:303832 Library:WILEY7N2.LIB

SI:53 Formula:C19H11NO4 CAS:522-30-5 MolWeight:317 RetIndex:0

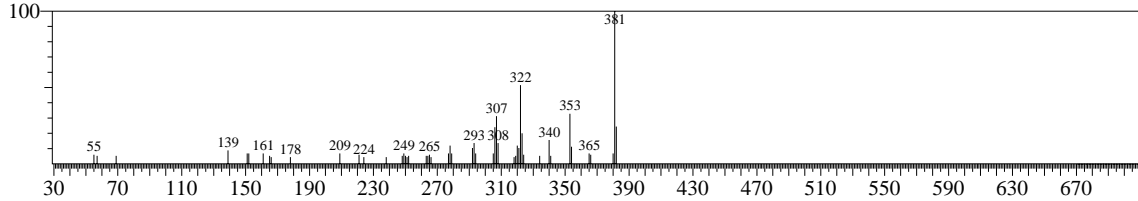
CompName:[1,3]Benzodioxolo[5,6-c]-1,3-dioxolo[4,5-i]phenanthridine \$\$ Norsanguinarine \$\$ Sanguinarine, 13-demethyl-



Hit#2 Entry:366749 Library:WILEY7N2.LIB

SI:52 Formula:C21H19NO6 CAS:0-0-0 MolWeight:381 RetIndex:0

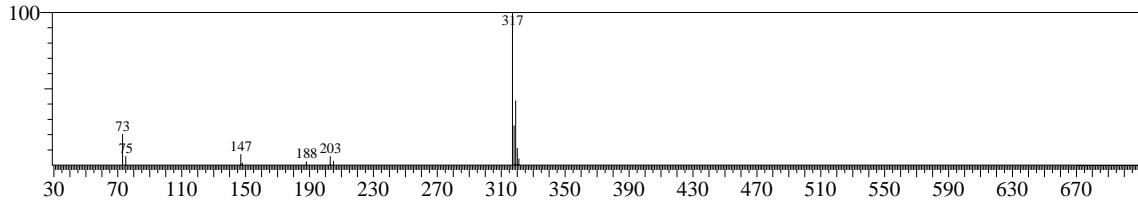
CompName:Arnothianamide



Hit#3 Entry:361242 Library:WILEY7N2.LIB

SI:49 Formula:C16H31ClN2O2Si2 CAS:0-0-0 MolWeight:374 RetIndex:0

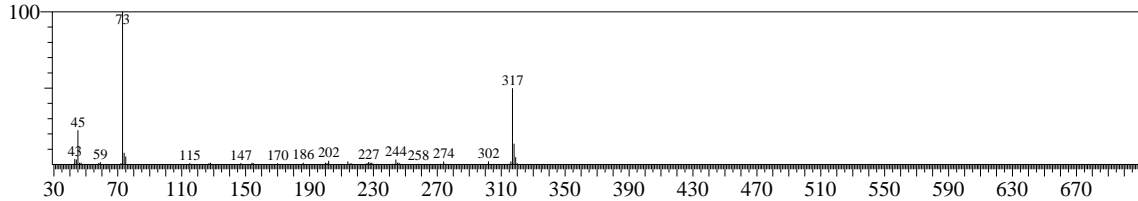
CompName:N,N-di-(t-butyltrimethylsilyl)-5-chlorouracyl



Hit#4 Entry:303720 Library:WILEY7N2.LIB

SI:49 Formula:C17H27NOSi2 CAS:74367-61-6 MolWeight:317 RetIndex:0

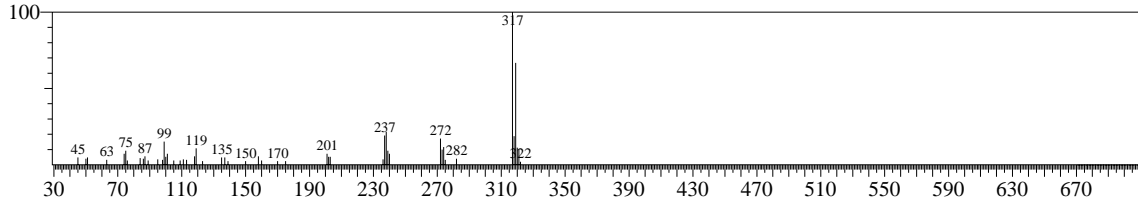
CompName:1H-Indole, 1-(trimethylsilyl)-3-[2-[(trimethylsilyl)oxy]-1-propenyl]-



Hit#5 Entry:303551 Library:WILEY7N2.LIB

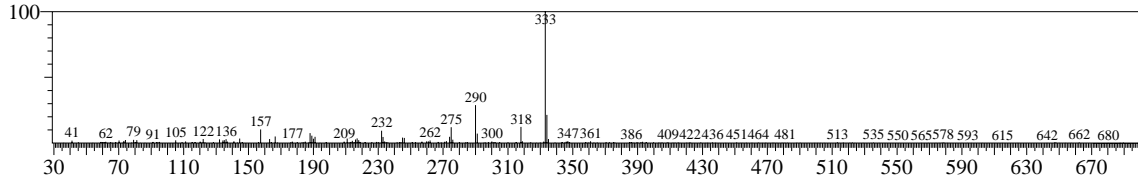
SI:48 Formula:C16H9Cl2NO2 CAS:126088-20-8 MolWeight:317 RetIndex:0

CompName:4',6-Dichlorocinchophen \$\$ 6-Chloro-2-(4-chlorophenyl)-4-quinolinecarboxylic acid #

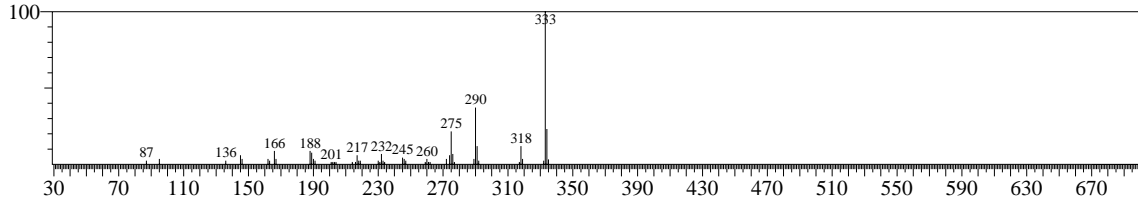


<< Target >>

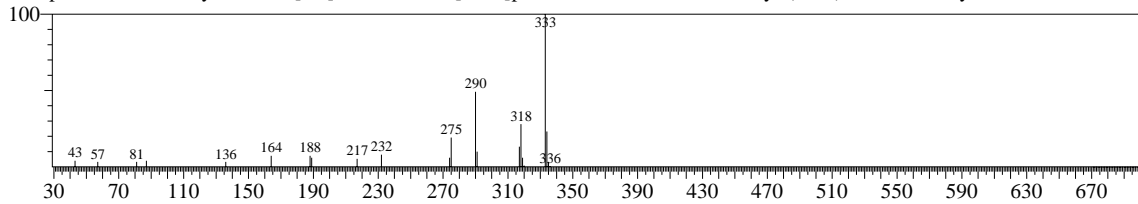
Line#:7 R.Time:7.633(Scan#:249) MassPeaks:320
RawMode:Averaged 7.617-7.650(248-250) BasePeak:333.00(451715)
BG Mode:Calc. from Peak



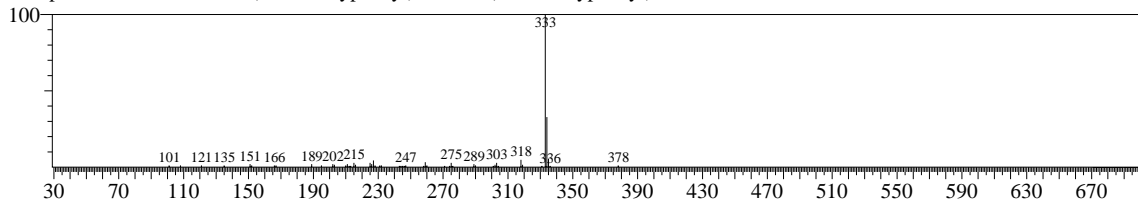
Hit#:1 Entry:322689 Library:WILEY7N2.LIB
SI:82 Formula:C20H15NO4 CAS:0-0-0 MolWeight:333 RetIndex:0
CompName:Demethylchelerythrine



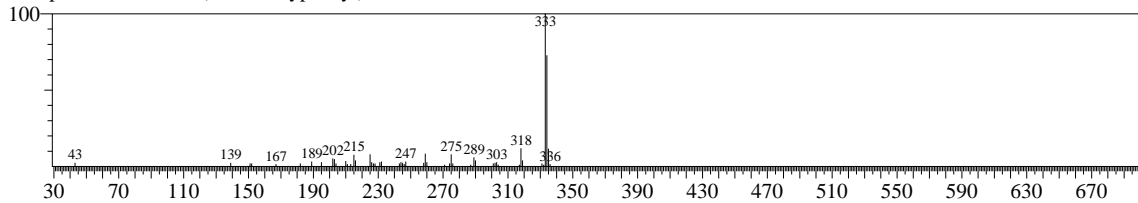
Hit#:2 Entry:322688 Library:WILEY7N2.LIB
SI:75 Formula:C20H15NO4 CAS:6900-99-8 MolWeight:333 RetIndex:0
CompName:Norchelerythrine \$\$ [1,3]Benzodioxolo[5,6-c]phenanthridine, 1,2-dimethoxy- (CAS) \$\$ Norchelerythrin \$\$ N-Norchele



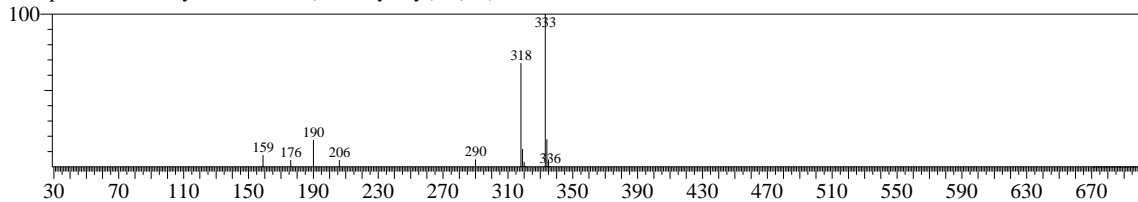
Hit#:3 Entry:364909 Library:WILEY7N2.LIB
SI:65 Formula:C23H22O5 CAS:95431-48-4 MolWeight:378 RetIndex:0
CompName:Acetic acid, tris(4-methoxyphenyl)- \$\$ Tris(4-methoxyphenyl)acetic acid #



Hit#:4 Entry:363542 Library:WILEY7N2.LIB
SI:62 Formula:C24H24O4 CAS:0-0-0 MolWeight:376 RetIndex:0
CompName:1,1,1-Tris(4-methoxyphenyl)acetone

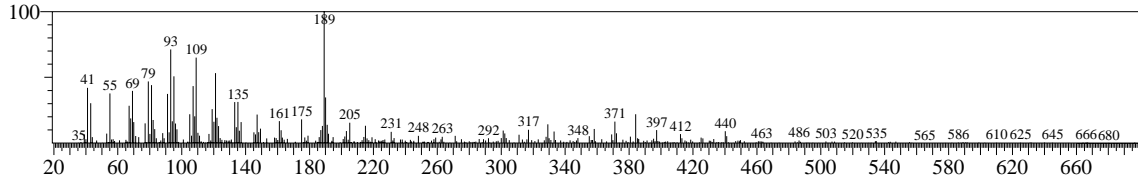


Hit#:5 Entry:322210 Library:WILEY7N2.LIB
SI:61 Formula:C11H16INOSi CAS:88761-39-1 MolWeight:333 RetIndex:0
CompName:2,3-Dihydro-6-iodo-7-(trimethylsilyl)-5(1H)-indolizinsonone



<< Target >>

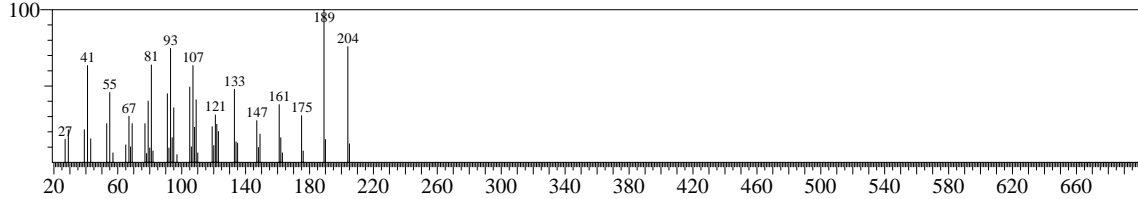
Line# 8 R.Time:10.367(Scan#:413) MassPeaks:381
RawMode:Averaged 10.350-10.383(412-414) BasePeak:189.10(106789)
BG Mode:Calc. from Peak



Hit# 1 Entry:133815 Library:WILEY7N2.LIB

SI:78 Formula:C15H24 CAS:473-13-2 MolWeight:204 RetIndex:0

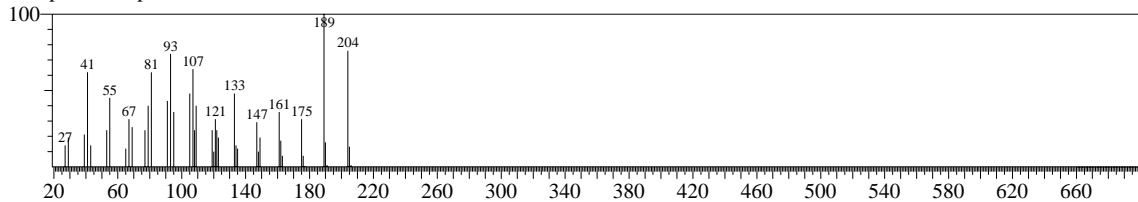
CompName:Naphthalene, 1,2,3,4,4a,5,6,8a-octahydro-4a,8-dimethyl-2-(1-methylethenyl)-, [2R-(2.alpha.,4a.alpha.,8a.beta.)]-



Hit# 2 Entry:134097 Library:WILEY7N2.LIB

SI:77 Formula:C15H24 CAS:473-13-2 MolWeight:204 RetIndex:0

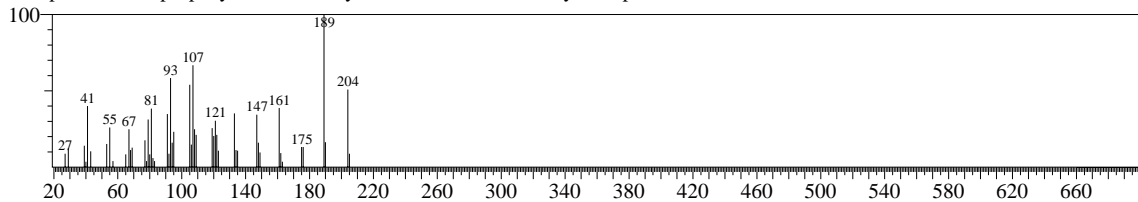
CompName:alpha.-selinene



Hit# 3 Entry:134285 Library:WILEY7N2.LIB

SI:77 Formula:C15H24 CAS:0-0-0 MolWeight:204 RetIndex:0

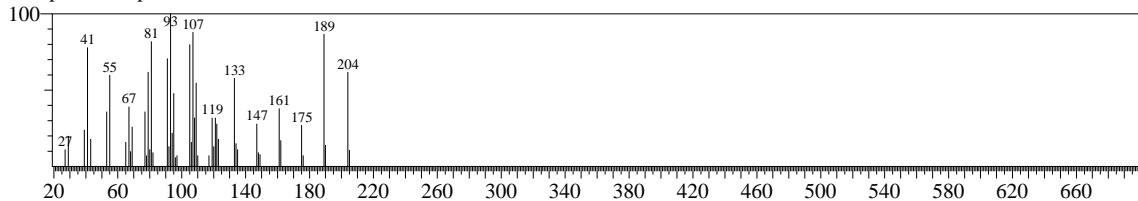
CompName:2-Isopropenyl-4a,8-dimethyl-1,2,3,4,4a,5,6,8a-octahydronaphthalene



Hit# 4 Entry:134096 Library:WILEY7N2.LIB

SI:77 Formula:C15H24 CAS:473-13-2 MolWeight:204 RetIndex:0

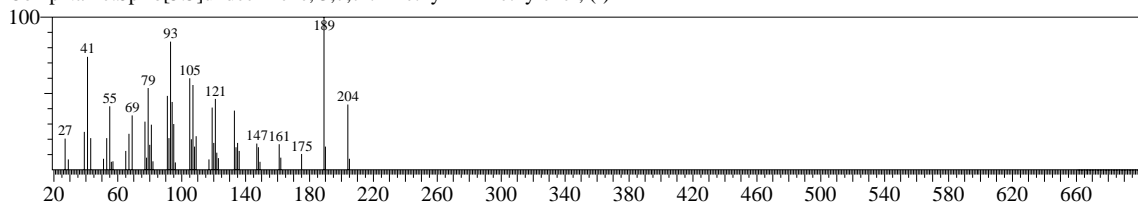
CompName:alpha.-selinene



Hit# 5 Entry:133641 Library:WILEY7N2.LIB

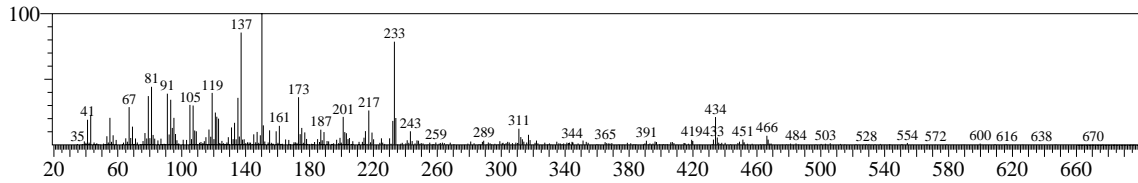
SI:76 Formula:C15H24 CAS:18431-82-8 MolWeight:204 RetIndex:0

CompName:Spiro[5.5]undec-2-ene, 3,7,7-trimethyl-11-methylene-, (-)-

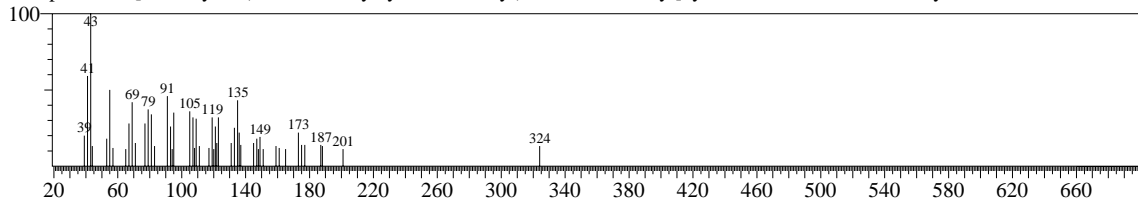


<< Target >>

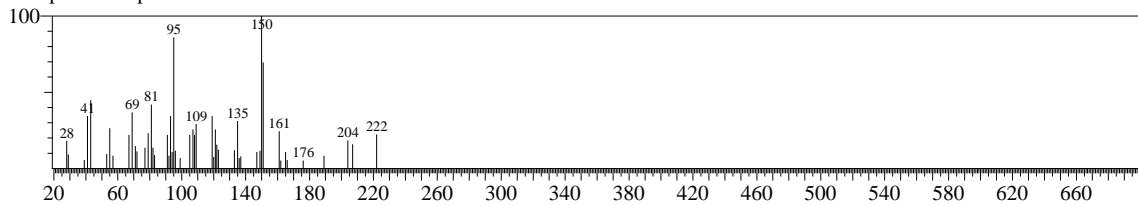
Line#9 R.Time:10.617(Scan#:428) MassPeaks:411
RawMode:Averaged 10.600-10.633(427-429) BasePeak:150.15(171031)
BG Mode:Calc. from Peak



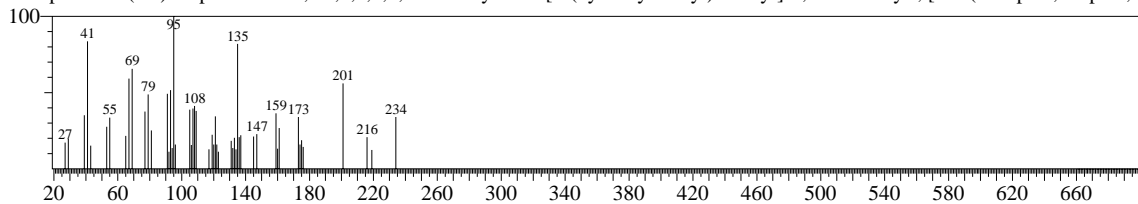
Hit#1 Entry:312666 Library:WILEY7N2.LIB
SI:66 Formula:C23H32O CAS:0-0-0 MolWeight:324 RetIndex:0
CompName:2-[4-methyl-6-(2,6,6-trimethylcyclohex-1-enyl)hexa-1,3,5-trienyl]cyclohex-1-en-1-carboxaldehyde



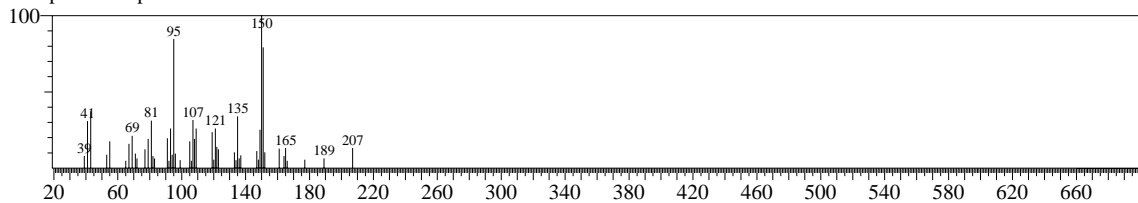
Hit#2 Entry:164146 Library:WILEY7N2.LIB
SI:66 Formula:C15H26O CAS:77-53-2 MolWeight:222 RetIndex:0
CompName:.alpha.-Cedrol



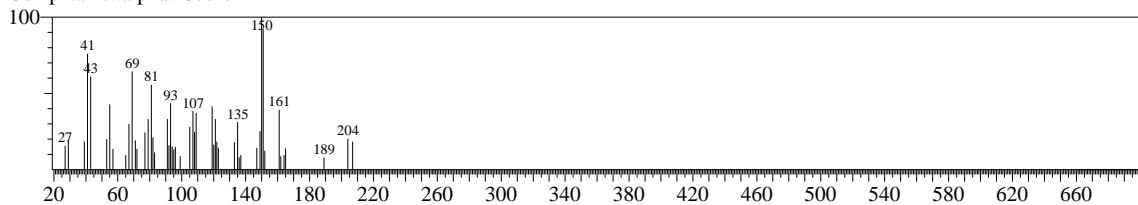
Hit#3 Entry:183461 Library:WILEY7N2.LIB
SI:65 Formula:C15H22O2 CAS:109897-57-6 MolWeight:234 RetIndex:0
CompName:2(1H)-Naphthalenone, 4a,5,6,7,8,8a-hexahydro-6-[1-(hydroxymethyl)ethenyl]-4,8a-dimethyl-, [4ar-(4a.alpha.,6.alpha.,8



Hit#4 Entry:164139 Library:WILEY7N2.LIB
SI:65 Formula:C15H26O CAS:77-53-2 MolWeight:222 RetIndex:0
CompName:.alpha.-Cedrol



Hit#5 Entry:164137 Library:WILEY7N2.LIB
SI:64 Formula:C15H26O CAS:77-53-2 MolWeight:222 RetIndex:0
CompName:.alpha.-Cedrol



Method

[Comment]

===== Analytical Line 1 =====

[AOC-20i+s]
 # of Rinses with Presolvent :3
 # of Rinses with Solvent(post) :5
 # of Rinses with Sample :3
 Plunger Speed(Suction) :Middle
 Viscosity Comp. Time :0.0 sec
 Plunger Speed(Injection) :High
 Syringe Insertion Speed :High
 Injection Mode :Normal
 Pumping Times :5
 Inj. Port Dwell Time :0.0 sec
 Terminal Air Gap :No
 Plunger Washing Speed :High
 Washing Volume :8uL
 Syringe Suction Position :0.0 mm
 Syringe Injection Position :0.0 mm
 Solvent Selection :All A,B,C

[GC-2010]
 Column Oven Temp. :275.0 °C
 Injection Temp. :310.00 °C
 Injection Mode :Split
 Flow Control Mode :Linear Velocity
 Pressure :139.5 kPa
 Total Flow :6.0 mL/min
 Column Flow :1.00 mL/min
 Linear Velocity :39.6 cm/sec
 Purge Flow :1.0 mL/min
 Split Ratio :4.0
 High Pressure Injection :OFF
 Carrier Gas Saver :OFF
 Splitter Hold :OFF
 Oven Temp. Program

Rate	Temperature(°C)	Hold Time(min)
-	275.0	2.00
8.0	320.0	6.00

< Ready Check Heat Unit >
 Column Oven : Yes
 SPL1 : Yes
 MS : Yes
 < Ready Check Detector(FTD) >
 < Ready Check Baseline Drift >
 < Ready Check Injection Flow >
 SPL1 Carrier : Yes
 SPL1 Purge : Yes
 < Ready Check APC Flow >
 < Ready Check Detector APC Flow >
 External Wait :Yes
 Equilibrium Time :0.1 min

[GC Program]

[GCMS-QP2010]
 IonSourceTemp :260.00 °C
 Interface Temp. :280.00 °C
 Solvent Cut Time :2.50 min
 Ionization Mode :SEI
 Detector Gain Mode :Relative
 Detector Gain :1.00 kV
 Threshold :5

[MS Table]

Group : 1
 Start Time :3.50min
 End Time :13.00min
 ACQ Mode :Scan
 Interval :1.00sec
 Scan Speed :714
 Start m/z :35.00
 End m/z :700.00

Sample Inlet Unit :GC

[MS Program]

Use MS Program :OFF